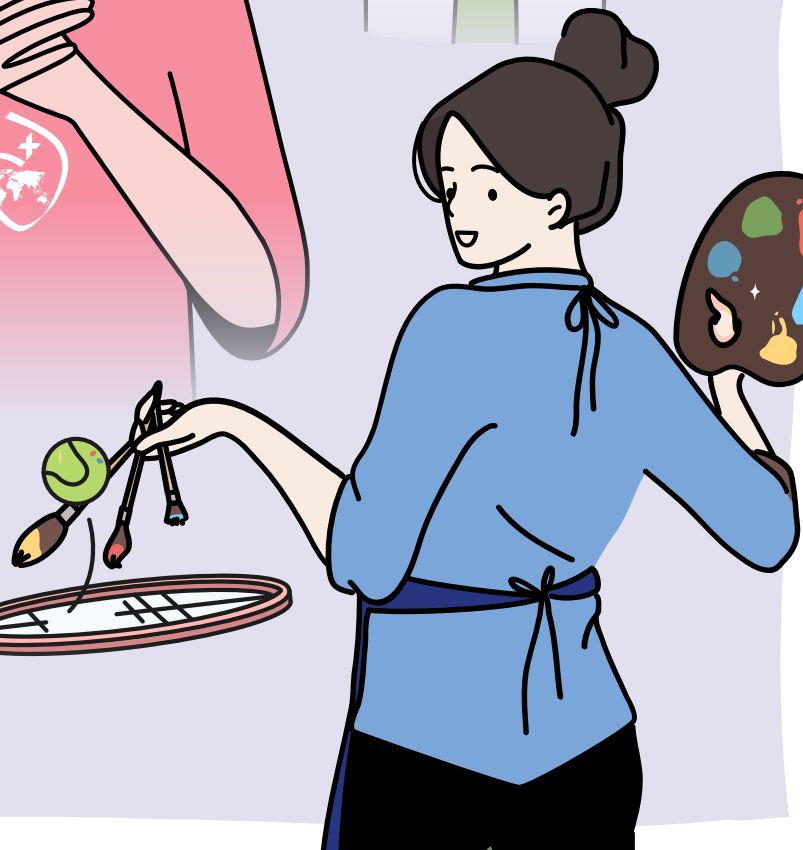
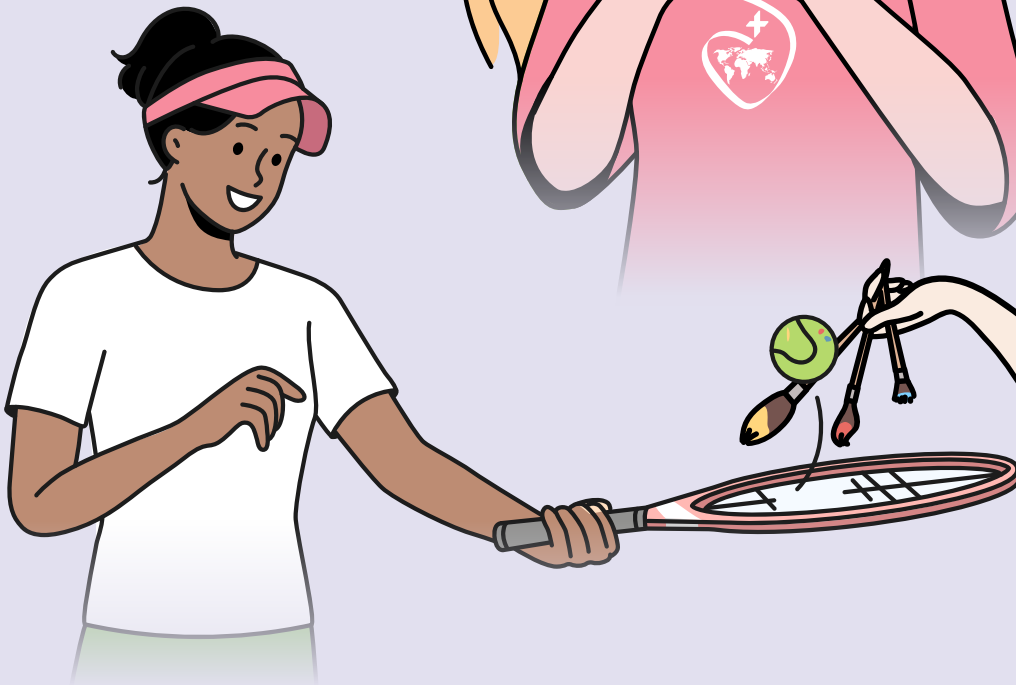
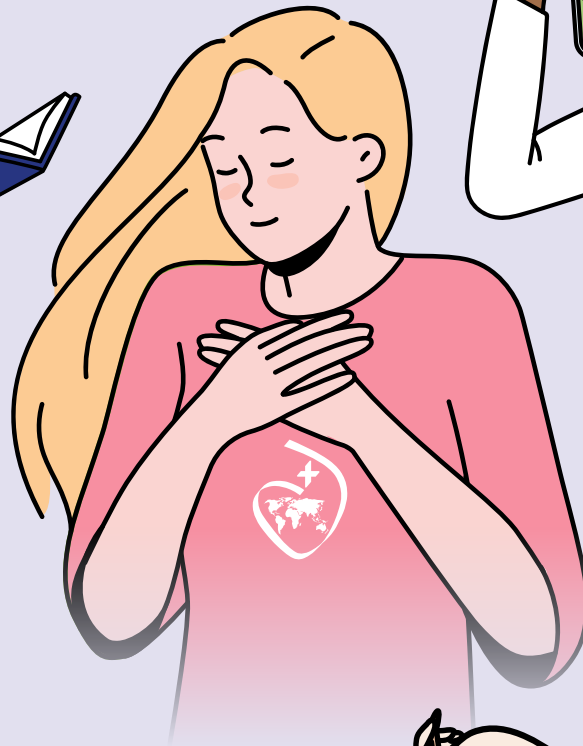




Sacred Heart High School

# Enrichment

## Spring 2026



# Dear Parents, Carers and Students,

Welcome to the Spring Enrichment Offer. I hope that the first term of Autumn activities has been exciting and rewarding for all participating students.

This Spring term the booklet will be in digital form only. As in Autumn, sign up for all activities will happen centrally via a Google Form on Google Classroom. As a staff, we are committed to ensuring there is a breadth of activities each term that are consistently run and centrally communicated to maximise learning and enjoyment.

Participation in enrichment activities during a students' time at school has been shown to benefit self-confidence, validation and socialisation. By participating in a vast range of trips, clubs and activities students acquire 'soft-skills' such as communication, teamwork, critical thinking and creativity which are transferable to subject specific knowledge and skills and help towards acquiring cultural capital and being career ready. Most of all, we hope students have fun and make core memories of their time at Sacred Heart.

I trust that there is something for everyone and encourage every student to participate this Spring term.

**Ms Brown**  
Head of Drama/Associate Assistant Headteacher – Enrichment



## Sign-Up

Unless otherwise stated, students can sign up to each activity using the Google Form located on their form class Google Classroom. The closing date for sign-up is **Friday 19th December 2025. Enrichment will begin on Monday 15th January 2026.**



## Get in quick!

Some activities have limited spaces. Places will be allocated based on the first students to sign up. When students sign up, their choices are 'time stamped' by Google to enable staff to see who signed up first.



## Consistent Participation and Attendance

By signing up to participate in an enrichment activity students are making a commitment to attend every session associated with that enrichment activity. Attendance will be monitored by the teachers in charge via EduLink registers. A one week grace period will be given in the first week of enrichment. After that, students are not permitted to quit activities.



## Rewards

Consistent participation and attendance will be rewarded through a badge system at year level assemblies.

# Contents

Art .....	2
Brilliant Club .....	4
Classics .....	5
Computer Science .....	7
Dance .....	8
Drama .....	10
DT .....	14
English .....	15
Geography .....	17
History .....	19
Library .....	20
Maths .....	24
MFL .....	25
Music .....	27
PE .....	30
Sociology and Psychology .....	34
RE .....	35
Science .....	37
Trips .....	41

# Art

## Year 9 Stretch Art Club

Description of enrichment activity	A weekly after-school club for Year 9s to try out different ways of creating Art outside of their normal Art lessons. They will be trying out GCSE content in this club to stretch and challenge them.
Date and/or frequency of activity	Wednesday 3.10-4.00pm
Year group	Yr 9
Cost	Free
Location/Room	S2 - Art Rooms
How do students sign up?	Via the Google Classroom Enrichment form
How many places are available?	25
Teacher/s in charge and external organizations	Ms Birkett

## Royal Academy Young Artist Competition

Description of enrichment activity	Students can submit their artwork made in or outside of school to the Royal Academy through Sacred Heart to be a part of the Young Artists Summer Exhibition at The Royal Academy.
Date and/or frequency of activity	March
Year group	Yr 7-13
Cost	Free
Location/Room	N/A
How do students sign up?	Hand in an art competition piece through The Royal Academy website
How many places are available?	All students from Years 7-13 can make a competition piece.
Teacher/s in charge and external organizations	Ms Birkett

## Gift Making

Description of enrichment activity	Come along and make gifts for your friends and family while exploring new skills with arts and crafts.
Date and/or frequency of activity	Tuesday 3.10-4.00pm
Year group	Yrs 7-13
Cost	Free
Location/Room	M6
How do students sign up?	Via the Google Classroom Enrichment Form
How many places are available?	20
Teacher/s in charge and external organizations	Ms Clarke and Ms Rose



# The Brilliant Club

## The Brilliant Club



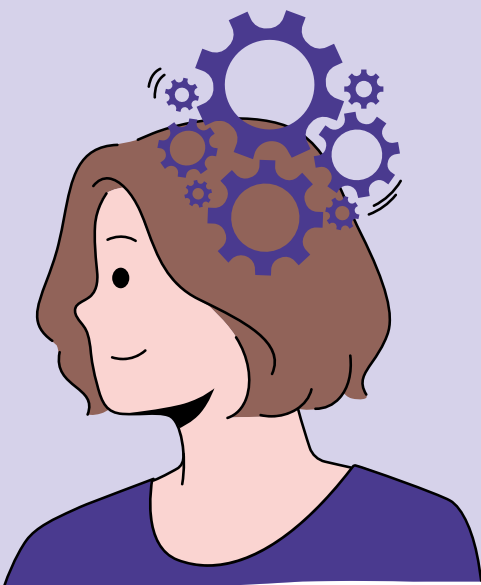
We are excited to be a **Brilliant Club School**, partnering with *The Brilliant Club* to run **The Scholars Programme** with our Year 9 and 10 students.

The Scholars Programme gives students in secondary school the opportunity to explore higher education and build key critical thinking and written communication skills to help them succeed in the next stages of their education.

Our students will take part in a series of seven university-style tutorials, delivered by a PhD tutor over seven weeks. They will be studying the topic: STEM – Biology and Ethics and will have to write a final assignment demonstrating the subject knowledge and key skills they have developed throughout the programme. Students will receive individual feedback and upon completion, attend a Graduation Event hosted by a London university to celebrate their achievements.

The Brilliant Club is by invitation only for Yr 9 and 10 students and run by Dr. Leach.

Year group	Yr 9-10
Teacher/s in charge and external organizations	Dr Leach



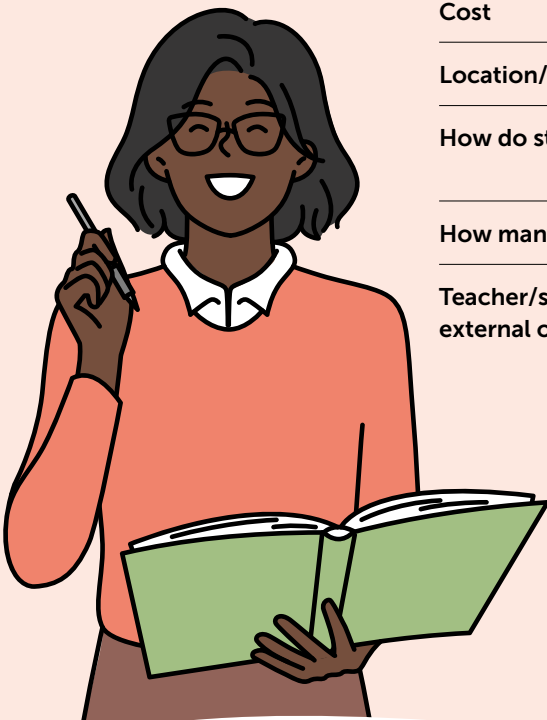
# Classics

## KS3/4 Classics Club

Description of enrichment activity	This club is for students who wish to explore the ancient world through various activities.
Date and/or frequency of activity	Wednesdays 3.10-4.00pm
Year group	Yr 7-11
Cost	Free
Location/Room	F11
How do students sign up?	Via the Google Classroom Enrichment form
How many places are available?	30
Teacher/s in charge and external organizations	Miss Marquis

## Mythology Movie Society

Description of enrichment activity	For lovers of historical myths and magic – pupils watch a filmed theatre production or a movie based on Classics and mythology.
Date and/or frequency of activity	3.15pm-end of film
Year group	Yr 10-13
Cost	Free
Location/Room	F11
How do students sign up?	Via the Google Classroom Enrichment form
How many places are available?	30
Teacher/s in charge and external organizations	Miss Marquis



Trip to the Roman Baths	
Description of enrichment activity	Come along on a trip to the Roman Baths where ancient architecture, steamy thermal waters, and a timeless sense of wonder come together in one unforgettable visit.
Date and/or frequency of activity	TBC March 2026
Year group	Yr 7-10 and Yr 12
Cost	Approx. £50
Location/Room	N/A
How do students sign up?	Via the Google Classroom Enrichment form
How many places are available?	30
Teacher/s in charge and external organizations	Miss Marquis

# Computer Science

Girls Can Code Club Game Design & Robotics	
Description of enrichment activity	Students will learn to design, code, and test their own video games as well as program and build robots.
Date and/or frequency of activity	Tuesdays 3.10-4.10pm
Year group	Yr 9
Cost	Free
Location/Room	G4/ICT1
How do students sign up?	Via Google Classroom Enrichment Form
How many places are available?	20
Teacher/s in charge and external organizations	Mr Ogwiji/Mr Hussain

Touch Typing	
Description of enrichment activity	Students work on and practice their typing skills on laptops.
Date and/or frequency of activity	Every Thursday during AM reg
Year group	Yr 7-13
Cost	Free
Location/Room	G4
How do students sign up?	Invitation only
How many places are available?	10
Teacher/s in charge and external organizations	Ms Akinlabi



# Dance

## Dance Company - Beginning/Intermediate

Description of enrichment activity	Pupils will master fundamental dance techniques, honing their physical and expressive skills through a dynamic curriculum centered on contemporary and jazz dance, while also exploring diverse styles such as Irish dance, ballet, and capoeira. They will delve into the historical origins of dance, studying the groundbreaking contributions of female modern dance pioneers, like Martha Graham, Doris Humphrey, and Isadora Duncan. Through engaging with dance improvisation, pupils will discover how subconscious movement serves as a powerful tool for self-expression and fuels the choreographic process. By term's end, pupils will refine two dance choreographies: one for a competitive dance event and another for a Christmas performance, showcasing their technical proficiency and creative artistry.
Date and/or frequency of activity	Mondays 3.15-4.00pm
Year group	Yr 7-13
Cost	Free
Location/Room	Dance studio
How do students sign up?	Via the Google Classroom Enrichment Form
How many places are available?	30
Teacher/s in charge and external organizations	Miss Anderson

## Dance Company - Advanced

Description of enrichment activity	Designed for pupils with significant dance experience, including successful completion of the SHDC 2024-2025 program and a new audition, this advanced class will elevate their technical and artistic abilities. Pupils will refine their dance technique through rigorous centre practice and corner work, enhancing their physical and expressive skills while deepening their understanding of sophisticated choreographic works. Building on their prior experience with dance improvisation, pupils will hone their ability to respond instinctively to diverse accompaniment, actively contributing original ideas to group choreographies.
Date and/or frequency of activity	Tuesdays 3.15-4.15pm
Year group	Yr 7-13
Cost	Free
Location/Room	Dance Studio
How do students sign up?	Via the Google Classroom Enrichment Form
How many places are available?	30
Teacher/s in charge and external organizations	Miss Anderson



## Irish Dancing Fitness

Description of enrichment activity	Jig and jive all the way to Ireland and work up a sweat while doing it!
Date and/or frequency of activity	Monday Week A 3.15-4.00pm
Year group	KS3
Cost	Free
Location/Room	Old Gym
How do students sign up?	Via the Google Classroom Enrichment form
How many places are available?	20
Teacher/s in charge and external organizations	Ms Mallon

## Trip to watch Giselle at the Royal Opera House

Description of enrichment activity	Students will attend a matinee performance of the ballet Giselle at the Royal Opera House Covent Garden.
Date and/or frequency of activity	Tuesday 24th February - matinee beginning at 12.30pm
Year group	Dance ensemble students + any interested KS3/4
Cost	Approx. £10
Location/Room	Royal Opera House
How do students sign up?	Via the Google Classroom Enrichment form
How many places are available?	35
Teacher/s in charge and external organizations	Ms Anderson

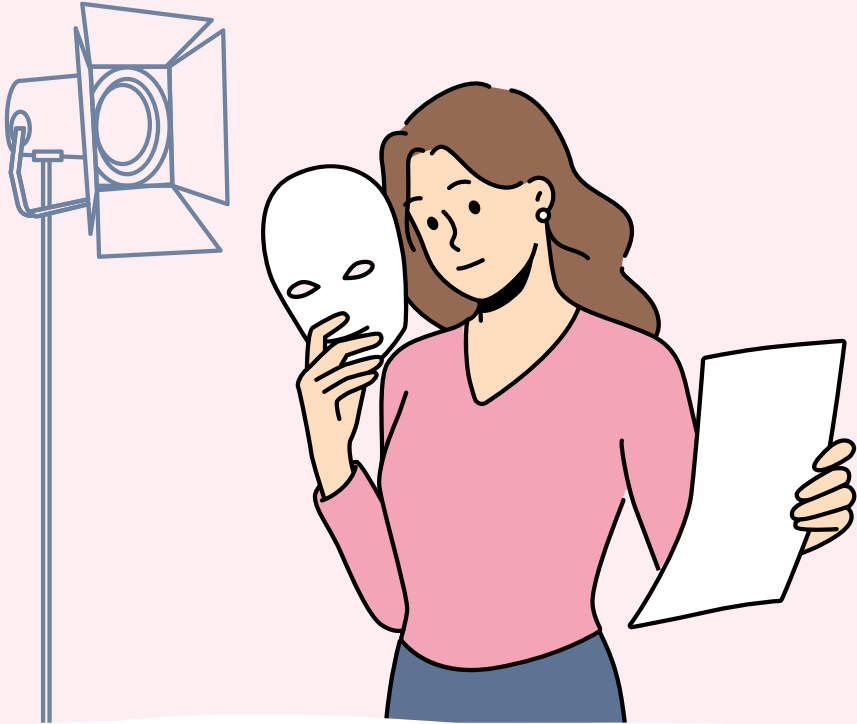
# Drama

## LAMDA

<b>Description of enrichment activity</b>	LAMDA (London Academy of Music and Dramatic Art) lessons are private speech and drama lessons with our specialist LAMDA teacher Ms Manning. These lessons are taken in pairs and focus on traditional acting with monologues or duologues. At the end of each term students take a performance exam in front of a visiting LAMDA examiner and then progress through to the next grade. Medal grades 6,7 and 8 acquire UCAS points. Lessons can be in Acting or Verse and Prose which is focusing more on elocution, public speaking and presentation. Older students once finished their acting grades may like to continue onto the Shakespeare or Musical Theatre qualification.
<b>Date and/or frequency of activity</b>	Every day at lunch and after school. 30 minute slots allocated.
<b>Year group</b>	Yr 7-13
<b>Cost</b>	£185 per term for 10 lessons + mock exam. PP pay 50%.
<b>Location/Room</b>	F1B
<b>How do students sign up?</b>	Via the Google Classroom Enrichment form
<b>How many places are available?</b>	Approx. 50 per term
<b>Teacher/s in charge and external organizations</b>	Ms Manning and Ms Brown

## Drama Club

<b>Description of enrichment activity</b>	Come along to Tuesday afternoon Drama Club where you will make a play from scratch, do some improvising, play some drama games and just have fun!
<b>Date and/or frequency of activity</b>	Tuesdays 3.15-4.00pm
<b>Year group</b>	Yr 7 & 8
<b>Cost</b>	Free
<b>Location/Room</b>	Old Gym
<b>How do students sign up?</b>	Via the Google Classroom Enrichment form
<b>How many places are available?</b>	50
<b>Teacher/s in charge and external organizations</b>	Ms Aushana





## The Sacred Heart Performing Arts Company

<b>Description of enrichment activity</b>	<p>The SHHS Performing Arts Society is a vibrant and inclusive enrichment program designed to nurture creativity, confidence, and collaboration among students through the expressive power of the arts. The company offers a dynamic platform for students to explore and develop their talents in drama, music, dance, and stage production.</p> <p>Through weekly workshops, rehearsals, and performance opportunities, members engage in a wide range of activities—from acting to choreography, vocal training, and breathwork. The company also hosts seasonal showcases, talent nights, and full-scale productions, giving students the chance to perform in front of live audiences and gain real-world experience in the performing arts.</p> <p>Beyond performance, the society fosters a strong sense of community, encouraging teamwork, self-expression, and leadership. Whether students aspire to a career in the arts or simply want to try something new, the Performing Arts Society is a creative space where passion meets purpose and confidence is built.</p>
<b>Date and/or frequency of activity</b>	Fridays 3.15-4.00pm
<b>Year group</b>	KS3
<b>Cost</b>	£5
<b>Location/Room</b>	Old Gym
<b>How do students sign up?</b>	Via the Google Classroom Enrichment form
<b>How many places are available?</b>	50
<b>Teacher/s in charge and external organizations</b>	Ms Mallon

## Trip to Ballet Shoes

<b>Description of enrichment activity</b>	A playful adaptation of the book by Noel Streatfield. Under the watchful eyes and guidance of their guardian Sylvia, Nana, and some unlikely lodgers, three sisters fight to pursue their individual passions. But in a world that wasn't built for women with big ambitions, can they forge a future, keep their family together, and even learn a dance or two along the way?
<b>Date and/or frequency of activity</b>	Wednesday 28 <sup>th</sup> January 1.30pm
<b>Year group</b>	Yr 9
<b>Cost</b>	£10
<b>Location/Room</b>	The National Theatre
<b>How do students sign up?</b>	Via the Google Classroom Enrichment form
<b>How many places are available?</b>	25
<b>Teacher/s in charge and external organizations</b>	Ms Brown

## Papatango Playwriting Workshops

<b>Description of enrichment activity</b>	Now in its 9th year at Sacred Heart, this series of workshops guides students in writing their own short play alongside an established playwright. This short play is then given to actors who perform it via Zoom to the students. Students then receive a professionally published copy of all the plays they have written.
<b>Date and/or frequency of activity</b>	2 Workshops: 11 <sup>th</sup> February 1.00-3.00pm (playwriting workshop) and 19 <sup>th</sup> March 1.00-3.00pm (your script performed by actors).
<b>Year group</b>	Yr 9
<b>Cost</b>	Free
<b>Location/Room</b>	Drama Room
<b>How do students sign up?</b>	Via the Google Classroom Enrichment form
<b>How many places are available?</b>	20
<b>Teacher/s in charge and external organizations</b>	Ms Brown in association with Papatango Playwriting



# DT

## Paper Engineering Club

Description of enrichment activity	Create original paper sculptures, pop-ups to amaze your friends and family.
Date and/or frequency of activity	4 weeks: Monday 12 <sup>th</sup> January to Monday 2 <sup>nd</sup> February 3.10-4.00pm
Year group	Yr 9 & 10
Cost	Free
Location/Room	DT3
How do students sign up?	Via the Google Classroom Enrichment form
How many places are available?	12
Teacher/s in charge and external organizations	Ms Rennalls/Mr Fry/Mr Haddaway

## Laser Cutting Club

Description of enrichment activity	Create your own designs on CAD and see them come to life with the help of the magical laser cutter.
Date and/or frequency of activity	4 weeks: Mondays 2 <sup>th</sup> March to Monday 23 <sup>rd</sup> March 3.10-4.00pm
Year group	Yr 7-9
Cost	Free
Location/Room	DT1
How do students sign up?	Via the Google Classroom Enrichment form
How many places are available?	16
Teacher/s in charge and external organizations	Ms Rennalls/Mr Fry/Mr Haddaway



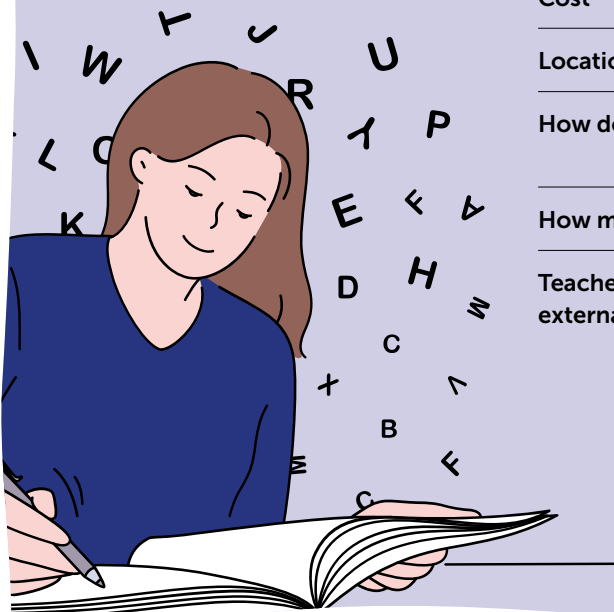
# English

## Podcast Society

Description of enrichment activity	Do you have something to say? Explore the challenge of making a podcast alongside professionals with access to all the hi-tech equipment to share your voice, opinions and stories!
Date and/or frequency of activity	Wednesdays 3.15-4.30pm
Year group	Yr 10-13
Cost	TBC between £20-£30
Location/Room	F2
How do students sign up?	Via the Google Classroom Enrichment form
How many places are available?	20
Teacher/s in charge and external organizations	Ms Brown with DragonFly Podcast company

## Dystopian Film Society

Description of enrichment activity	Delve into alternate worlds and expand your knowledge of dystopias through watching renown screen adaptations of films.
Date and/or frequency of activity	Week B Mondays 3.15-4.00pm
Year group	Yr 10-13
Cost	Free
Location/Room	English classroom
How do students sign up?	Via the Google Classroom Enrichment form
How many places are available?	30
Teacher/s in charge and external organizations	Ms Porter and Ms Marsh



## Trip to Warner Bros Studios - Harry Potter

Description of enrichment activity	See the famous J.K Rowling series come to life in his immersive experience at Warner Bros Studios.
Date and/or frequency of activity	TBC – End of March
Year group	Yr 7-13
Cost	TBC Approx. £40 total including travel
Location/Room	Warner Bros Studios
How do students sign up?	Via the Google Classroom Enrichment form (or by owl!)
How many places are available?	20
Teacher/s in charge and external organizations	Mr Williams

## Debating Clubs

Description of enrichment activity	Whether you are a beginner and want to try something new, continuing to explore your debating skills or well on your way to the House of Commons, debating is a great way to find your voice!
Date and/or frequency of activity	3.15pm-4.30pm Tuesdays – Yr 7 beginners Wednesdays – Yr 8 & 9 intermediate Friday – Yr 10-13 advanced
Year group	All year groups - see above
Cost	Free
Location/Room	W5
How do students sign up?	Via the Google Classroom Enrichment form
How many places are available?	30
Teacher/s in charge and external organizations	Mr Cooper

# Geography

## Netherlands Trip

Description of enrichment activity	Activities including a canal cruise, a guided walking tour of Amsterdam, and a visit to Kinderdijk World Heritage Site.  This is an excellent opportunity to experience a city which offers an insight into rich cultural heritage, innovative energy management and a range of unique coastal areas.
Date and/or frequency of activity	13 <sup>th</sup> -17 <sup>th</sup> February
Year group	Yr 11-13 – places already allocated
Cost	N/A
Location/Room	N/A
How do students sign up?	N/A
How many places are available?	N/A
Teacher/s in charge and external organizations	Ms Nye

## Senior Model UN Society

Description of enrichment activity	Model UN is a student version of the real-life United Nations, where students represent countries and debate real world issues
Date and/or frequency of activity	Wednesdays 3.10-4.00pm
Year group	Yr 10-13
Cost	Free
Location/Room	W6
How do students sign up?	Sign up via the Enrichment Form on Google Classroom
How many places are available?	25
Teacher/s in charge and external organizations	Ms Nye



Model UN Society	
Description of enrichment activity	Model UN is a student version of the real-life United Nations, where students represent countries and debate real world issues
Date and/or frequency of activity	Thursday 3.10-4.00pm
Year group	Yr 7-8
Cost	Free
Location/Room	W6
How do students sign up?	Sign up via the Enrichment Form on Google Classroom
How many places are available?	25
Teacher/s in charge and external organizations	Ms Nye

# History & Politics

MP Talk	
Description of enrichment activity	Andy Slaughter (MP) gives talk to A-Level Politics and History students about life as an MP, general political issues and offers an opportunity for students to ask questions through a Q&A style activity.
Date and/or frequency of activity	February/March (depending on availability)
Year group	Yr 12 & 13
Cost	Free
Location/Room	Chapel/Reception room
How do students sign up?	Via the Google Classroom Enrichment form
How many places are available?	Unlimited
Teacher/s in charge and external organizations	History and Politics Department

Hampton Court Palace	
Description of enrichment activity	Year 10 History cohort are taken to Hampton Court Palace for an interactive tour of the grounds and palace itself, with an expert led session. This ties to the GCSE curriculum of studying Henry VIII and his ministers such as Wolsey and Cromwell.
Date and/or frequency of activity	February/March date TBC
Year group	Yr 10
Cost	£9
Location/Room	Hampton Court Palace
How do students sign up?	Must be studying GCSE History
How many places are available?	History GCSE cohort
Teacher/s in charge and external organizations	History Department



# Library

## Magazine Club

**Description of enrichment activity** Magazine Club is back after we said farewell to our lovely Y13 Magazine Club leaders last year. Magazine Club creates our very own school magazine for everyone to read! Do join if you are interested in journalism, writing on various topics, creating collages/ mood boards, aesthetically pleasing displays, and much more. There is a role for everyone in Magazine Club, but there will be leadership opportunities available for older year groups to take charge and become the executive directors of the Magazine.

**Date and/or frequency of activity** Tuesdays 3.10-4.00pm

**Year group** Yr 7-13

**Cost** Free

**Location/Room** Library

**How do students sign up?** Via the Google Classroom Enrichment form

**How many places are available?** 15

**Teacher/s in charge and external organizations** Ms Spek



## The Carnegies Book Award Shadowing

**Description of enrichment activity** Would you like to have a say in which book will win the Children and Young Adults Carnegie Medal for Writing this year? Join our Carnegie Awards judging panel! We will be reading, discussing, and judging the books short-listed for the Carnegie Medal 2025, and voting on the one we think should win! (+ watching the award ceremony (probably online) and participating in lots of extra fun things along the way!

A bit of context: The Carnegies are the UK's longest running and best loved children's and young adult's book awards. It is a brilliant opportunity to have a say in which book wins the 2026 medal!

**Date and/or frequency of activity** Thursdays 3.10-4.00pm. This Club will start in March, when the Shortlisted titles will be revealed.

**Year group** Yr 7-9

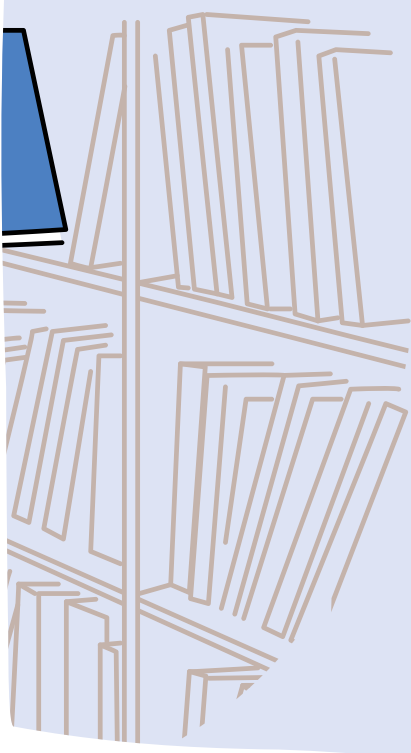
**Cost** Free, all Carnegie shortlisted books will be supplied by the library

**Location/Room** Library

**How do students sign up?** Via the Google Classroom Enrichment form

**How many places are available?** 10

**Teacher/s in charge and external organizations** Ms Spek



## Poetry by Heart Showcase

<b>Description of enrichment activity</b>	Take part in our school-wide spoken poetry showcase! Choose a poem to learn and perform aloud during our school showcase in March. The winning performances from our school showcase will be submitted to Poetry by Heart for a chance to perform at Shakespeare's Globe Theatre and win the poetry by heart National Showcase in June or July! Even if you do not get to perform at Shakespeare's Globe, we still have a good chance of going to Shakespeare's Globe and attending the National Showcase (we went last year and it was amazing!).
<b>Date and/or frequency of activity</b>	Check-in meeting every Friday at 3.00-3.30pm, one school showcase event in March, National Showcase in June/July (TBC)
<b>Year group</b>	Yr 7-13
<b>Cost</b>	Free
<b>Location/Room</b>	Library
<b>How do students sign up?</b>	Via the Google Classroom Enrichment form
<b>How many places are available?</b>	Unlimited
<b>Teacher/s in charge and external organizations</b>	Ms Spek

## Story Writing Club

<b>Description of enrichment activity</b>	Unleash your imagination in our high school Story Writing Club, where students create original tales and develop their writing skills. From short stories to epic adventures, you'll get to share your work, get feedback, and grow as a storyteller in a fun, supportive environment.
<b>Date and/or frequency of activity</b>	Wednesdays 3.00-4.00pm
<b>Year group</b>	Yr 7-9
<b>Cost</b>	Free
<b>Location/Room</b>	Library
<b>How do students sign up?</b>	Via the Google Classroom Enrichment Form
<b>How many places are available?</b>	30
<b>Teacher/s in charge and external organizations</b>	Mr Jones

## Upper School Book Society

<b>Description of enrichment activity</b>	Dive into new worlds and exciting stories with this Book Club, where readers come together to discuss thought-provoking books and share their perspectives. Whether you love fiction or nonfiction, there's something for everyone in our book selections and lively conversations.
<b>Date and/or frequency of activity</b>	Mondays 3.10-4.00pm
<b>Year group</b>	Yr 10-13
<b>Cost</b>	Free
<b>Location/Room</b>	Library
<b>How do students sign up?</b>	Via the Google Classroom Enrichment Form
<b>How many places are available?</b>	20
<b>Teacher/s in charge and external organizations</b>	Ms Spek

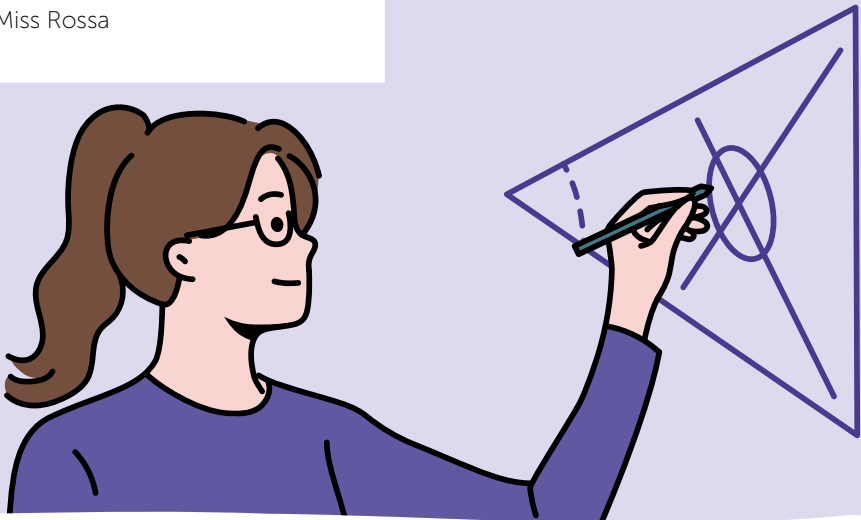
# Maths

## Further Maths

Description of enrichment activity	Challenge and extend your GCSE mathematical knowledge in this enrichment activity.
Date and/or frequency of activity	Every Wednesday all year
Year group	Yr 11
Cost	Free
Location/Room	Maths department
How do students sign up?	By invitation only
How many places are available?	20-25
Teacher/s in charge and external organizations	Dr Leach and Mr Ludlow

## Senior UKMT Challenge

Description of enrichment activity	Challenge your mathematical knowledge by taking part in this nation-wide competition.
Date and/or frequency of activity	Wednesday 28 <sup>th</sup> January
Year group	Yr 9-10
Cost	TBC
Location/Room	W7/W8
How do students sign up?	Students selected by Maths department based on attainment
How many places are available?	Unlimited
Teacher/s in charge and external organizations	Miss Rossa



# MFL

## GCSE Latin club

Description of enrichment activity	Revise and challenge your Latin understanding in this enrichment club for GCSE Latin students.
Date and/or frequency of activity	Mondays 3.15-4.15pm
Year group	Yr 11
Cost	Free
Location/Room	E3
How do students sign up?	Students studying Latin
How many places are available?	5
Teacher/s in charge and external organizations	Mr Enright

## Anthea Bell Competition

Description of enrichment activity	A creative translation workshop where students work with short authentic texts and prepare entries for the national Anthea Bell Prize for Young Translators.
Date and/or frequency of activity	One-off workshop + follow-up submission session.
Year group	Yr 9-13
Cost	Free
Location/Room	F12
How do students sign up?	Via the Google Classroom Enrichment form and signing up on the sheet outside the MFL office.
How many places are available?	Unlimited
Teacher/s in charge and external organizations	Mr Munoz



## MFL Film Club

Description of enrichment activity	Join our French and Spanish Movie Club, where we explore vibrant stories, sharpen our language skills, and enjoy great films from two rich cinematic traditions – all in one fun, welcoming space.
Date and/or frequency of activity	Fridays 3.15-4.15pm
Year group	Yr 9-13
Cost	Free
Location/Room	MFL classrooms
How do students sign up?	Via the Google Classroom Enrichment Form
How many places are available?	30
Teacher/s in charge and external organizations	Mrs lafrate and Mrs Berrisford



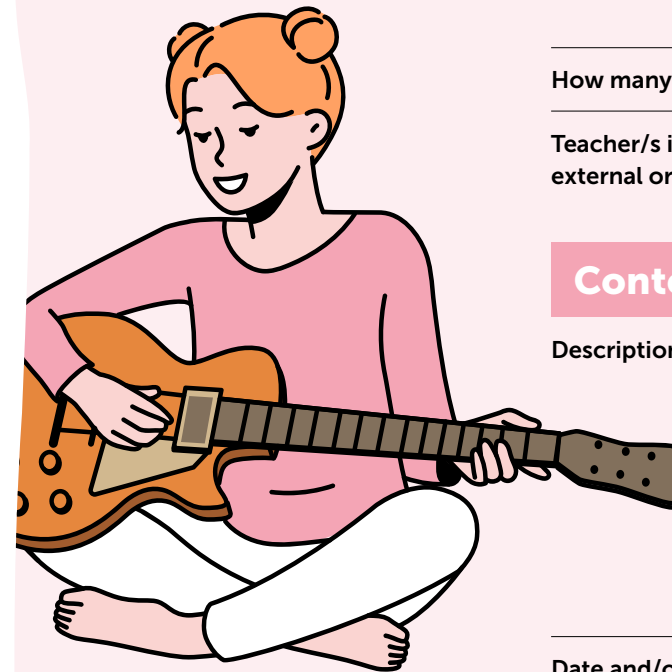
# Music

## Sacred Chamber Choir

Description of enrichment activity	<b>If you were a Sacred Chamber Choir member in Autumn, you are expected to continue for Spring.</b> This choir will perform in all of our masses and liturgies that occur throughout the year. New members welcome.
Date and/or frequency of activity	Mondays 3.15-4.00pm
Year group	Yr 7-13
Cost	Free
Location/Room	Chapel
How do students sign up?	Via the Google Classroom Enrichment form
How many places are available?	Unlimited
Teacher/s in charge and external organizations	Mr Swain

## Contemporary Show Choir

Description of enrichment activity	<b>If you were a Show Choir member in Autumn, you are expected to continue for Spring.</b> This choir is the fun show choir. We will sing contemporary songs we all know and love and will perform in termly concerts, assemblies and various other events inside and outside of school. New members welcome.
Date and/or frequency of activity	Wednesdays 3.15-4.00pm
Year group	Yr 7-13
Cost	Free
Location/Room	G6/9
How do students sign up?	Via the Google Classroom Enrichment form
How many places are available?	30-40 - the more the merrier!
Teacher/s in charge and external organizations	Ms Lynn





## Orchestra

<b>Description of enrichment activity</b>	<b>If you were in the Orchestra in Autumn, you are expected to continue for Spring.</b> In the orchestra, the instrumentalists will work on a range of songs for school masses, concerts and termly performances including the school musical in July. All instrumentalists welcome. Required to be Grade 1 equivalent standard. New members welcome.
<b>Date and/or frequency of activity</b>	Tuesdays 3.15-4.00pm
<b>Year group</b>	Yr 7-13
<b>Cost</b>	Free
<b>Location/Room</b>	G6/9
<b>How do students sign up?</b>	Via the Google Classroom Enrichment form
<b>How many places are available?</b>	Maximum 30
<b>Teacher/s in charge and external organizations</b>	Mrs Jones

## Band Rehearsals

<b>Description of enrichment activity</b>	Students who have already formed bands are welcome to sign up to rehearse in the band rooms. When rehearsing students are to autonomously rehearse pieces for concerts, competitions and other performance opportunities that arise. Teachers are available to help with arrangements and set up. Bands are expected to rehearse approx. 10 times a term to be considered for concerts and Battle of the Bands.
<b>Date and/or frequency of activity</b>	Wednesday and Thursdays 3.15-4.00pm
<b>Year group</b>	Yr 7-13
<b>Cost</b>	Free
<b>Location/Room</b>	Band room, W2, G6
<b>How do students sign up?</b>	Contact Mrs Jones mjones@sacredh.lbhf.sch.uk
<b>How many places are available?</b>	15
<b>Teacher/s in charge and external organizations</b>	Mrs Jones

## Schola Cantorum

<b>Description of enrichment activity</b>	A smaller group of singers with a focus on choral and sacred repertoire, developing blend, tone, and musicianship through regular rehearsals and sight-singing.
<b>Date and/or frequency of activity</b>	Thursdays 7.50-8.20pm
<b>Year group</b>	Yr 8-13
<b>Cost</b>	Free
<b>Location/Room</b>	G6
<b>How do students sign up?</b>	Via the Google Classroom Enrichment form
<b>How many places are available?</b>	10-15
<b>Teacher/s in charge and external organizations</b>	Mrs Swain

## Steel Pans

<b>Description of enrichment activity</b>	Steel Pan band is a fun, energetic group where you get to play amazing Caribbean rhythms on real steel drums. No experience needed - just sign up!
<b>Date and/or frequency of activity</b>	Fridays 3.15-4.00pm
<b>Year group</b>	Yr 7-11
<b>Cost</b>	Free
<b>Location/Room</b>	G6
<b>How do students sign up?</b>	Via the Google Classroom Enrichment form
<b>How many places are available?</b>	10-15
<b>Teacher/s in charge and external organizations</b>	Mrs Swain

PE

Running Club

Date and/or frequency of activity	Once a week: Monday mornings from 7.45-8.10am
Year group	Yrs 7-13
Cost	Free
Location/Room	Netball courts
How do students sign up?	Via Google Classroom Enrichment form
How many places are available?	30
Teacher/s in charge and external organizations	Ms Coleman

Badminton

Date and/or frequency of activity	Yr 7: Monday 26 <sup>th</sup> January, Monday 2 <sup>nd</sup> February, Monday 9 <sup>th</sup> February 3.15-4.15pm Yr 8-9: Monday 23 <sup>rd</sup> February, Monday 2 <sup>nd</sup> March, Monday 9 <sup>th</sup> March 3.15-4.15pm Yr 10-11: Monday 16 <sup>th</sup> March and Monday 23 <sup>rd</sup> March 3.15-4.15pm Yr 12-13: All Monday mornings 7.45-8.20am
Year group	As above
Cost	Free
Location/Room	Sports Hall
How do students sign up?	Via the Google Classroom Enrichment form
How many places are available?	30 per Monday session (30 Yr 7, 30 Yr 8-9, 30 Yr 10-11, 30 Yr 12-13)
Teacher/s in charge and external organizations	Ms Eames



Yr 7 Netball

Date and/or frequency of activity	Tuesdays 3.15-4.15pm
Year group	Yr 7
Cost	Free
Location/Room	Netball courts
How do students sign up?	Via the Google Classroom Enrichment form
How many places are available?	28
Teacher/s in charge and external organizations	Miss Neckles and Ms Eames

Yr 8 Netball

Date and/or frequency of activity	Wednesdays 3.15-4.15pm
Year group	Yr 8
Cost	Free
Location/Room	Netball Courts
How do students sign up?	Via the Google Classroom Enrichment form
How many places are available?	28
Teacher/s in charge and external organizations	Ms Ives

Senior Yr-9-11 Netball

Date and/or frequency of activity	Mondays 3.15-4.15pm
Year group	Yr 9-11
Cost	Free
Location/Room	Netball courts
How do students sign up?	Via the Google Classroom Enrichment form
How many places are available?	28
Teacher/s in charge and external organizations	Ms Coleman/Ms Edwards



Yr 7-8 Basketball	
Date and/or frequency of activity	Thursdays 3.15pm-4.15pm
Year group	Yr 7-8
Cost	Free
Location/Room	Sports Hall
How do students sign up?	Via the Google Classroom Enrichment form
How many places are available?	30
Teacher/s in charge and external organizations	Coach Cheryl

Yr 9-11 Basketball	
Date and/or frequency of activity	Fridays 3.15-4.15pm
Year group	Yr 9-11
Cost	Free
Location/Room	Sports Hall
How do students sign up?	Via the Google Classroom Enrichment form
How many places are available?	30
Teacher/s in charge and external organizations	Coach Cheryl

Volleyball	
Date and/or frequency of activity	Tuesdays 3.15-4.15pm as of 27 <sup>th</sup> January
Year group	Yr 7-13
Cost	Free
Location/Room	Sports Hall
How do students sign up?	Via the Google Classroom Enrichment form
How many places are available?	30
Teacher/s in charge and external organizations	Ms Coleman

Football	
Date and/or frequency of activity	Wednesdays 3.15-4.15pm
Year group	Yr 7-13
Cost	Free
Location/Room	Sports Hall
How do students sign up?	Via the Google Classroom Enrichment form
How many places are available?	30
Teacher/s in charge and external organizations	External – Coach Hannah

Cheerleading	
Date and/or frequency of activity	Wednesdays 3.15-4.15pm Thursday 3.15-4.45pm
Year group	Yr 7-13
Cost	£50
Location/Room	Sports Hall
How do students sign up?	Via the Google Classroom Enrichment form
How many places are available?	30 on Wednesday, 30 on Thursday
Teacher/s in charge and external organizations	External – Coach Cammi

# Sociology and Psychology

## The Women's Society and Meditation Club

Description of enrichment activity	The Women's Society is a supportive space where young women empower each other through discussion, leadership, and community engagement. Join us to build confidence, explore important issues, and make a positive impact together. Every 4th Monday will be a meditation session!
Date and/or frequency of activity	3.10-4.00pm
Year group	Yr 10-13
Cost	Free
Location/Room	Bute 2
How do students sign up?	Via the Google Classroom Enrichment Form
How many places are available?	20
Teacher/s in charge and external organizations	Ms Pethiyagoda



# RE

## Rome Trip

Description of enrichment activity	Year 10 students are invited on an inspiring RE trip to Rome, where they'll explore iconic sites, deepen their understanding of faith and history, and experience the heart of religious heritage firsthand.
Date and/or frequency of activity	25 <sup>th</sup> -28 <sup>th</sup> March
Year group	Yr 10
Cost	£800pp
Location/Room	Rome
How do students sign up?	Sign-up closed
How many places are available?	45
Teacher/s in charge and external organizations	Ms Curtis

## Bible Club

Description of enrichment activity	Studying the historical context of Bible books and unpacking the meaning of them for the 21 <sup>st</sup> century. The opportunity to learn, research and present to others.
Date and/or frequency of activity	Tuesday Week A
Year group	Yr 10-11
Cost	Free
Location/Room	S10
How do students sign up?	Via the Google Classroom Enrichment form
How many places are available?	20
Teacher/s in charge and external organizations	Ms Petrica

## The Philosophy Society

Description of enrichment activity	Our Philosophy Society for Years 11–13 offers a lively space to debate big ideas, challenge assumptions, and explore life's deepest questions with curious minds.
Date and/or frequency of activity	3.15–4.00pm
Year group	Yr 10–13
Cost	Free
Location/Room	S15
How do students sign up?	Via Google classroom Enrichment form
How many places are available?	20
Teacher/s in charge and external organizations	Ms Maton



# Science

## RSC UK Chemistry Olympiad

Description of enrichment activity	To test chemical knowledge through a written test with real-world chemistry problems
Date and/or frequency of activity	Wednesday 28 <sup>th</sup> January
Year group	Yr 12 & 13
Cost	Free
Location/Room	In school
How do students sign up?	Via the Google Classroom Enrichment form and with science teachers
How many places are available?	Yr 12-13 cohort Chemistry
Teacher/s in charge and external organizations	Dr Rigos

## British Science Week

Description of enrichment activity	<p>The theme for 2026 is 'Curiosity: what's your question?'.</p> <p>This theme is all about getting you thinking about what you most want to know about the world, and how you could find out.</p>
Date and/or frequency of activity	Once a week to mark British Science Week is a ten-day celebration of science, technology, engineering and maths that will take place between 6-15 March 2026!
Year group	Yr 7-13
Cost	Free
Location/Room	Science labs
How do students sign up?	Participation will be in science lessons throughout the week
How many places are available?	Unlimited
Teacher/s in charge and external organizations	Science department

## British Biology Olympiad

<b>Description of enrichment activity</b>	A competition that challenges and stimulates students with an interest in biology to expand and extend their talents. It enables students to demonstrate their talent and to be suitably rewarded with publicly recognised certificates.
<b>Date and/or frequency of activity</b>	19 <sup>th</sup> -28 <sup>th</sup> January
<b>Year group</b>	Yr 13
<b>Cost</b>	Free
<b>Location/Room</b>	ICT Room
<b>How do students sign up?</b>	Via the Google Classroom Enrichment Form
<b>How many places are available?</b>	22
<b>Teacher/s in charge and external organizations</b>	Mrs Pervez



## Gardening Club

<b>Description of enrichment activity</b>	Students learn how to plant and look after plants on the balcony in science.
<b>Date and/or frequency of activity</b>	3.15-4.00pm
<b>Year group</b>	KS3
<b>Cost</b>	Free
<b>Location/Room</b>	Science Garden
<b>How do students sign up?</b>	Via Google Classroom Enrichment form
<b>How many places are available?</b>	15
<b>Teacher/s in charge and external organizations</b>	Mr Tunnicliff/Ms Ives

## KS3 STEM Club

<b>Description of enrichment activity</b>	Students carry out a variety of experiments and make valid conclusions.
<b>Date and/or frequency of activity</b>	Wednesdays 3.15-4.00pm
<b>Year group</b>	KS3
<b>Cost</b>	Free
<b>Location/Room</b>	C17
<b>How do students sign up?</b>	Via the Google Classroom Enrichment form
<b>How many places are available?</b>	20
<b>Teacher/s in charge and external organizations</b>	Mr Vidovic








## Crest Award

<b>Description of enrichment activity</b>	Students complete an independent STEM investigation and work towards the Bronze CREST Award. They develop practical skills, scientific thinking, data analysis, and project presentation.
<b>Date and/or frequency of activity</b>	Wednesdays 3.15-4.00pm
<b>Year group</b>	Yr 8 & 9
<b>Cost</b>	£10 per student (Bronze CREST registration fee). School may cover the cost depending on budget.
<b>Location/Room</b>	C8
<b>How do students sign up?</b>	Via the Google Classroom Enrichment form
<b>How many places are available?</b>	20
<b>Teacher/s in charge and external organizations</b>	Ms Trasper plus Maryia Shah as a technician support. External organisation: British Science Association – CREST Awards

## Medical Mavericks Human Guinea Pig Workshop

<b>Description of enrichment activity</b>	Have you ever wanted insight into the medical profession? Join this hands on workshop where you can take blood, record and print an ECG, try keyhole surgery, see inside your body with an ultrasound machine and take a picture of the inside of your eye while exploring dozens of NHS career pathways.
<b>Date and/or frequency of activity</b>	Wednesday 14 <sup>th</sup> March during class time
<b>Year group</b>	Yr 7-10
<b>Cost</b>	Approx. £14 per student
<b>Location/Room</b>	Science Lab
<b>How do students sign up?</b>	Via the Google Classroom Enrichment Form
<b>How many places are available?</b>	20 places for each year group
<b>Teacher/s in charge and external organizations</b>	Ms Ives and Medical Mavericks

## Fancy a trip in the Spring Term?

<b>CLASSICS</b>	<b>Roman Bath Trip in March</b> Yr 7-10 and 12 March TBC	
<b>DANCE</b>	<b>Trip to watch the ballet - Giselle at the Royal Opera House</b> Dance students + anyone interested in KS3/4, Tuesday 24 <sup>th</sup> February matinee	
<b>DRAMA</b>	<b>Ballet Shoes performance at the National Theatre</b> Yr 9 28 <sup>th</sup> January matinee	
<b>HARRY POTTER CLUB</b>	<b>Warner Bros. Movie World Harry Potter experience</b> Yr 7-10 and 13 Date TBC	
<b>GEOGRAPHY</b>	<b>Netherlands Trip</b> Yr 11-13 – places already selected 13 <sup>th</sup> -17 <sup>th</sup> February	
<b>HISTORY</b>	<b>Hampton Court Palace trip</b> Yr 10 students Date TBC	
<b>RE</b>	<b>Rome Trip</b> Yr 10 25 <sup>th</sup> -28 <sup>th</sup> March – places have already been allocated	



Monday

Activity	Year groups	Time	Location
Badminton	Yr 7-13 – see PE page for different dates for different years	3.15-4.00pm	Sports Hall
Band rehearsals	Yr 7-13	3.10pm-4.00pm via sign up	Band rooms
Dance Company – Beginning and Intermediate	Yr 7-13	3.15-4.00pm	Dance Studio
Dystopian Screen Society	Yrs 10-13	Week B 3.10pm	F2
Irish Dancing Fitness	KS3	3.10-4.00pm	Old Gym
LAMDA	Yr 7-13	30 min slot	F1B
Laser Cutting Club	Yr 7-9	3.10-4.00pm For 4 weeks 2 <sup>nd</sup> Mar – 23 <sup>rd</sup> Mar	DT1
Latin Club	Yr 11	3.10-4.00pm	E3
Paper Engineering Club	Yr 9 and 10	3.10-4.00pm For 4 weeks 12 <sup>th</sup> Jan – 2 <sup>nd</sup> Feb	DT3
Run Club	Yr 7-13	7.45-8.10am	Netball court
Sacred Chamber Choir	Yr 7-13	3.10-4.00pm	Chapel
Senior Netball	Yr9-11	3.15-4.00pm	Netball court
The Women’s Society and Meditation Club	Yr 10-13	3.15-4.00pm	Bute Hall
Upper School Book Society	Yr 10-13	3.10-4.00pm	Library

Tuesday

Activity	Year groups	Time	Location
Band rehearsals	Year 7-13	3.10pm-4.00pm via sign up	Band rooms
Bible Club	Years 10-11	Week A 3.15-4pm	S10
Dance Company – Advanced	Yr 7-13	3.15-4.00pm	Dance Studio
Debating – Beginners	Yr 7	3.10-4.00pm	W5
Drama Club	Yr 7 and 8	3.10-4.00pm	Old Gym
Gift Making Club	Yr 7-13	3.10pm-4.00pm	M6
Girls Can Code – Game Design and Robotics	Yr 9	3.10pm-4.00pm	G4/ICT1
LAMDA	Yr 7-13	30 min slot	F1B
Magazine Club	Yr 7-13	3.10-4.00pm	Library
Orchestra	Yrs 7-13	3.10pm-4.00pm	Music Room
Volleyball	Yr 7-13	3.15-4.00pm	Sports Hall
Yr 7 Netball	Yr 7	3.15-4.00pm	Netball court

Wednesday

Activity	Year groups	Time	Location
Band rehearsals	Year 7-13	3.10pm-4.00pm via sign up	Band rooms
Business talk with Dame Dervilla Mitchell	Yr 11-13	During the school day	Bute Hall
Cheerleading	Years 7-11	3.15-4.45pm Taster session on 18 <sup>th</sup> September	Dance Studio
Chemistry Olympiad	Yr12-13	28 <sup>th</sup> January	Science Block
Contemporary Show Choir	Years 7-13	3.15-4.00pm	Music Room
Crest Award	Yr 8-9	3.10-4.00pm	C8
Debating – Intermediate	Year 8 and 9	3.15-4.00pm	W5
Football	Yr 7-13	3.15-4.00pm	Sports Hall
Further Maths	Yr 11	3.15-4.00pm	Maths Department
Gardening Club	KS3	3.10-4.00pm	Science Garden
KS3 STEM Club	KS3	3.10-4.00pm	C17
KS3/4 Classics Club	Yr 7-11	3.10pm-4.00pm	F11
LAMDA	Yr 7-13	30 min slot	F1B
Medical Mavericks Human Guinea Pig Workshop	Yr 7-10	Wednesday 14 <sup>th</sup> March during the school day	Science Block
Model UN Society	Yr 10-13	3.15-4.00pm	W6
Mythology Movie Society	Yr 10-13	3.10pm-end of movie 4 <sup>th</sup> Feb and 18 <sup>th</sup> March	F11
Papatango Playwriting Workshops	Yr 9	11 <sup>th</sup> February and 18 <sup>th</sup> March during class	Drama Room
Philosophy Society	Yr 10-13	Week B 3.10pm-4pm	S10
Podcast Society	Yr 10-13	3.10pm-4.45pm	F1
Senior UKMT Challenge	Yr 9 -11	Wednesday 28 <sup>th</sup> January During the school day	Maths Department
Story Writing Club	Yr 7-9	3.15-4.00pm	Library
Trip to Ballet Shoes at the National Theatre	Yr 9	Wednesday 28 <sup>th</sup> January matinee	National Theatre
Yr 9 Art Stretch Club	Yr 9	3.10pm-4.00pm	S2 Art Room
Yr 8 Netball	Yr 8	3.15-4.00pm	Netball court

Thursday

Activity	Year groups	Time	Location
Band rehearsals	Year 7-13	3.10pm-4.00pm via sign up	Band rooms
Basketball	Yr 7 - 8	3.15-4.00pm	Sports Hall
Cheerleading	Yr 7-11	3.15-4.45pm  Taster session on 18 <sup>th</sup> September	Dance Studio
LAMDA	Yr 7-13	30 min slot	F1B
Lower School Model UN	Yr 7 and 8	3.10-4.00pm	W6
Music Scholar Cantorum	Yr 8-13	7.50am-8.30am	G6
The Carnegies Book Award Shadowing	Yr7-9	3.10-4.00pm – in March once the shortlist is announced	Library
Touch Typing	By invitation	AM registration	G4

Friday

Activity	Year groups	Time	Location
Band rehearsals	Yr 7-13	3.10pm-4.00pm via sign up	Band rooms
Basketball	Yr 9-11	3.15-4.00pm	Sports Hall
Debating – Advanced	Years 10-13	3.15-4.00pm	W5
LAMDA	Yr 7-13	30 min slot	F1B
MFL Film Club	Yr 9-13	3.10-4.00pm	MFL rooms
Poetry by Heart Showcase	Yr 7-13	3.15-3.30pm	Library
Sacred Heart Performing Arts Company	KS3	3.10-4.00pm	Old Gym
Steel Pans	Yr 7-11	3.15-4.00pm	Music Room



# **Enrichment**

**Spring 2026**



**Sacred Heart High School**