

A large heart shape is centered on the page. The heart's border is decorated with a colorful stained glass pattern, featuring various geometric and floral designs in red, blue, yellow, and green. The interior of the heart is white.

Supplementary Information

Sacred Heart
HIGH SCHOOL HAMMERSMITH SIXTH FORM

WELCOME TO **YOUR** SIXTH FORM



Contents

Introduction	4
Support for UCAS and Oxbridge Applications	5
Departmental Activities	6-13
External Support	14-15
Becoming More Socially Aware	16
Sixth Form Committee	17
Sixth Form Social Life and Wellbeing	19
Alumni Comments	20-21
‘Outstanding’ Sacred Heart Sixth Form – Ofsted Report 2017	22-23

Your Sixth Form

INTRODUCTION

As you enter your final GCSE year, now is the time to start getting excited about your next steps in education and your pathways to higher education and the world of work.

At Sacred Heart Sixth Form, we combine passion for the education of girls and young women with a commitment to world class excellence, to equip our students for the challenges of 21st century life.

You will find here, outstanding teaching, learning and pastoral care. Our staff are prepared to give generously of their time and expertise to support you in achieving the very best that you are capable of, leading to outstanding results for all

This booklet outlines some of the opportunities you can benefit from beyond the day to day work of the classroom. Your time in the Sixth Form will fly, but if you make wise choices, you will have the opportunity to build a strong foundation for all that you want to do and achieve in the future.

SUPPORT FOR UCAS & OXBRIDGE APPLICATIONS

Students receive support through PSHE and one-to-one with tutors in writing personal statements.

They also have access to expert and independent one to one advice from Deborah Streatfield of 'My Big Career'.

<http://www.mybigcareer.org/#newhomepage>.

You will have your own one to one meetings with Deborah and you will be given her email address so you will be able to call on her for additional support as necessary.

Students thinking of applying to Oxford or Cambridge can take part in Pembroke College, Oxford's outreach programme and can apply for places on the Lumina Course at Harrow School in the summer term, which offers a week of activities to prepare for making Oxbridge applications. We have links with a range of partners who can support university applicants with interview practice.



Deborah Streatfield, founder of MyBigCareer, is a careers consultant, who has provided personalised support and advice to students for more than 30 years.

She currently works with a diverse range of clients including families of students seeking specialist advice on a retained basis as well as homeless people looking for a path to a fairly paid job, an education and a career.

Deborah provides guidance across GCSE and A-Level choices, university admission applications, and vocational courses leading to trade and professional occupations.



DEPARTMENT ACTIVITIES

ART

- Numerous Museum and Gallery trips across London
- Overseas Art trip (so far we have gone to Amsterdam and Barcelona)
- Internal and external art competitions

BUSINESS AND ECONOMICS

- Lecture and events from the Royal Economics Society
- Visit to the Bank of England
- Trips to Business organisations, museums and theatre productions such as "Made in Dagenham"
- Business and Economics highly respected speakers in their field such as Mark Carney.
- Barclay's Skills workshops

CLASSICS

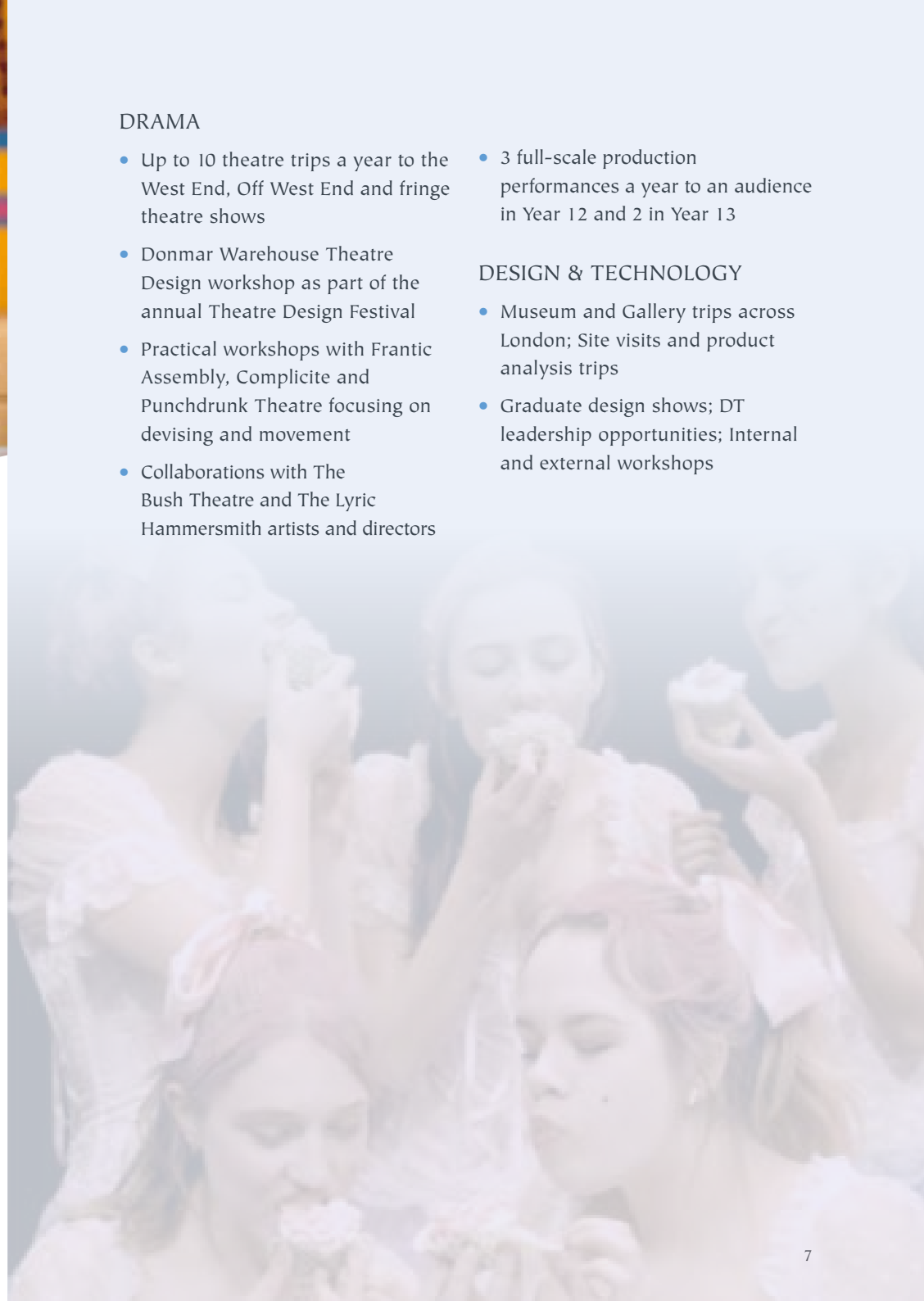
- Annual classical civilisations study day at the British Museum, tailor-made to the A-level syllabus
- Lectures and events from the Classical Association
- Lectures and events run by 'Classics for All' – linking us with other Classics depts. in local schools
- Numerous gallery and museum trips, London and beyond
- Cambridge university Classics masterclass
- Established links with Roehampton university – one of the leading UK universities for Classical studies

DRAMA

- Up to 10 theatre trips a year to the West End, Off West End and fringe theatre shows
- Donmar Warehouse Theatre Design workshop as part of the annual Theatre Design Festival
- Practical workshops with Frantic Assembly, Complicite and Punchdrunk Theatre focusing on devising and movement
- Collaborations with The Bush Theatre and The Lyric Hammersmith artists and directors
- 3 full-scale production performances a year to an audience in Year 12 and 2 in Year 13

DESIGN & TECHNOLOGY

- Museum and Gallery trips across London; Site visits and product analysis trips
- Graduate design shows; DT leadership opportunities; Internal and external workshops



ENGLISH

- Residential trip to Stratford-upon-Avon for Year 12 and 13 this September, including a half day workshop on Richard III with the Royal Shakespeare Company; visits to Shakespeare's birthplace, house and grave; a backstage tour of the RSC theatre; and an evening performance of a play at the RSC theatre.
- A Level revision conferences on core texts in both Year 12 and 13.
- Peer mentoring programme to support Year 11s using your own recent experiences of doing GCSEs.
- Access to MASSOLIT A Level online video courses to aid revision and understanding, produced by leading university academics.
- Theatre trips for both core texts and other interesting productions in partnership with the Drama department.
- Subscriptions to emagazine and English Review to support and aid wider reading around the subject.
- Peer support programme for Year 12s supporting students in KS3 – a wonderful community service opportunity with vouchers for participation.
- One-to-one support from Ms Feenstra for researching and applying to study English at university.

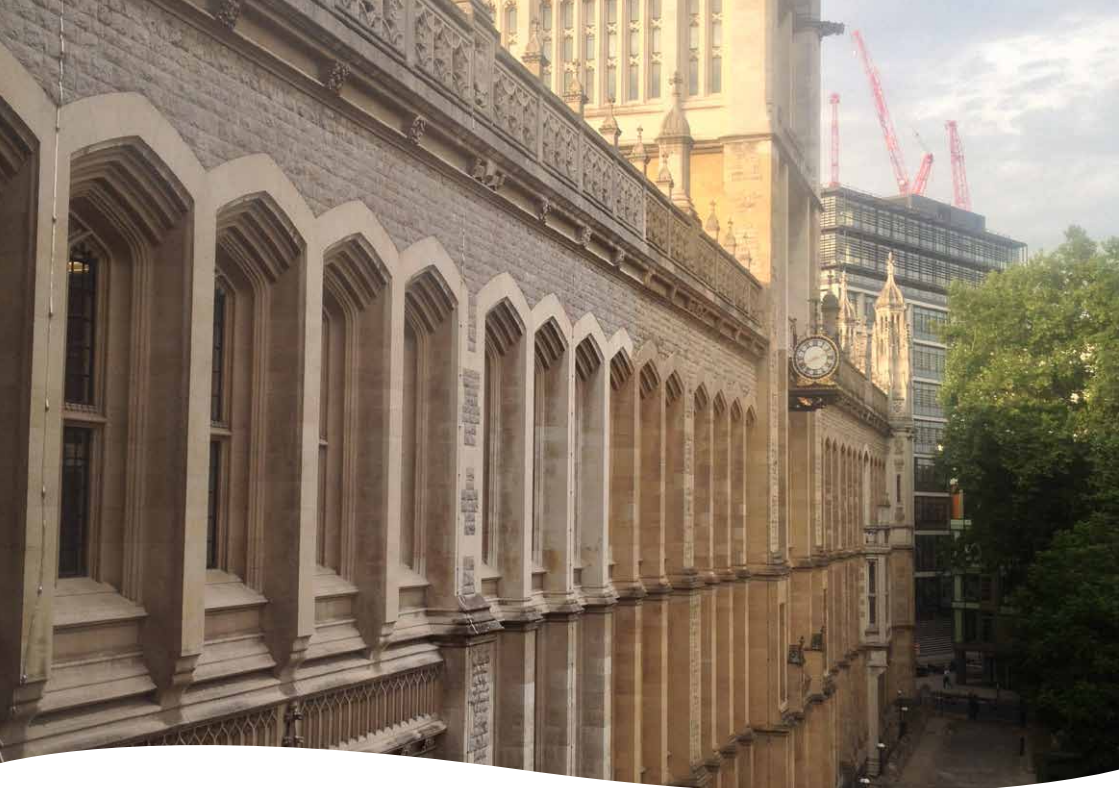


GEOGRAPHY

- Trip to Bay of Naples and Y12 fieldtrip to Blencathra (The Lake District)
- Lectures and events from the Royal Geographic Society
- Membership to the Geography Association & Royal Geographical Society
- Lecture events such as 'Coutts Lecture Events' – linking us with other Geography depts. in other schools
- SHHS Geography Ambassadors

HISTORY & POLITICS

- National Archives visit
- Holocaust Survivor Talk
- Lessons from Auschwitz course and visit to Auschwitz
- Berlin Trip
- Houses of Parliament visit
- Supreme Court visit
- Question and answer session from the local MP



MATHS

- Seminar/talks held at St Pauls' throughout the year
- Workshops/lectures at UCL
- Maths masterclasses at King's College
- Links with St Paul's to organise STEP and MAT support sessions.
- Provisional Y13/12 residential
- Exam skills workshops ensuring students are equipped with all necessary skills and knowledge to tackle the new A level specification
- Subscription to 'Integrale' website which provides students with video tutorials and extra resources for preparation.
- KS5 enrichment programme includes Sixth Form students supporting Y7 students in lessons
- Workshops led by Y12/13 to mentor and support KS4 students

MODERN LANGUAGES (FRENCH & SPANISH)

- London Centre for Languages and Culture study days
- Pembroke College summer school
- British Film Institute study day
- Film Club
- Year 13 trip to Malaga
- Alumni network (visits from SHHS students who pursued a language at university)
- Y7 extra help workshop run by Y12 students

MUSIC

- Links with the Royal College of Music - lunchtime recitals and talks
- Southbank and Barbican concerts will be arranged
- Study days with other local school music depts.
- Other subject-related visits
- Opportunity to work with ensemble groups/rehearse and direct music events

PSYCHOLOGY

- Visit to Krakow Poland/Auschwitz planned for February half term
- Visit to Freud Museum in North London with sociology and RE departments
- Visit to the Bethlem Hospital Archive to examine patient histories and documents related to the treatment of the mentally ill
- Speaker from South West London and St George's Mental Health NHS Trust to talk about university and careers in psychology.
- Opportunities to attend expert panels for exam preparation.

PHYSICAL EDUCATION

- Duke of Edinburgh Silver Award (Gold can also be facilitated through external partners)
- Leadership opportunities within H&F
- Certificated Coaching awards in a range of sports
- Workshop with speakers from BUPA sports science and Biomechanics faculties.
- Trip to sports science lab / Olympic Park
- Extracurricular opportunities such as Learn to Row programme with Fulham Reach Boat Club.

RELIGIOUS EDUCATION

- University study days
- Opportunities to support in RE lessons with Yr7 pupils.
- Yr12 students run Philosophy Club for Yr7&8
- Links with St Mary's university Bioethics dept.
- Study days with exam boards
- LASAR – science and religion conference
- Opportunities with CAFOD to apply for 'gap year' activities and placements abroad.



SCIENCE

- Big Sister
- STEAM Careers day
- K+ programme at Kings College
- Imperial Mentoring programme
- BAE apprentices
- Sutton Trust Summer School
- Physics in Action
- Iceland Trip
- Chemistry in Action
- A level Chemistry Live
- Biology in Action
- Evening Lectures
- Summer School Imperial College
- Biomedical Engineering talk in school

- Medical talk in school from Imperial College
- STEM imperial Potential Programme
- Regular outside speakers invited in to speak about their scientific field
- Science Club

SOCIOLOGY

- Visit to Krakow Poland/Auschwitz planned for February half term
- Visit to the Old Bailey Crown Courts
- Visit to Freud Museum in North London with psychology and RE departments
- Opportunities to attend expert panels for exam preparation



EXTERNAL SUPPORT

Sacred Heart has established a wide range of links with external organisations to support careers education and guidance; to deepen your experience of learning at A-level and enrich your applications for university or higher level apprenticeships.

HIGHER EDUCATION/CAREERS

- Deborah Streatfield, My Big Career, Careers and UCAS advice
- Pembroke College, Oxford, Rose Chantiluke
rose.chantiluke@ox-net.org
- Lumina Programme, Harrow School, Mrs Kim Tootill, Programmes Assistant
Too-tillK@harrowschool.org.uk
- Cambridge University Students' Union (CUSU) Shadowing Scheme Olivia Hylton-Pennant CUSU Access & Funding Officer 2017-18
shadowing-scheme@cusu.cam.ac.uk
- UCAS - UCAS Advisers
advisers@email.ucas.com
- St Paul's Girls' School - Ruth Joyce, Higher Education & Careers Administrator & Gap Year Coordinator
Ruth.Joyce@spgs.org
- Careers Insight Days - Elizabeth Herath
elizabeth.herath@gmail.com
- Sutton Trust (through Graham Scott)
- Imperial College Summer Schools Signe Arias, Summer Schools and Activities Co-ordinator
s.arias@imperial.ac.uk
- Imperial College Healthcare NHS Trust Work Experience programme -
imperial.work.experience@nhs.net
- Westminster Tutors (for Oxbridge interview preparation) Virginia Maguire, Principal,
virginia@westminstertutors.co.uk
- Godolphin and Latymer (for Oxbridge interview preparation) Rachel Hart
rhart@godolphinandlatymer.com
- Jane Marshall Outreach School Visits Programme Manager (for medicine inter-view prep)
j.marshall@imperial.ac.uk
- Raminder Bath, Credit Suisse
- Rachel Bull, Arcadia, Community Partnership Manager
Rachel.Bull@arcadiagroup.co.uk

ACADEMIC ENRICHMENT

- London 6th Form Debating Association - Anwulika Elliott
anwulika@icloud.com (Judith Parker had taken this on)
- K+ scheme (multiple subjects) Farzana Pervez coordinates this for science and maths also has students on the scheme - James Pickering
james.pickering@kcl.ac.uk
- Oxbridge/Russell Group academic enrichment opportunities - Amy Le Grande
6fpartnership@gmail.com
- Shout Out UK -
matteo@shoutoutuk.org
- Speakers for Schools - Lily Clifford
lily.clifford@speakers4schools.org
- Houses of Parliament - Siobhan Wilson, Education Assistant
s.wilson@parliament.uk
- Pathways to Law programme - Ard.Pathways
Ard.Pathways@lse.ac.uk
- Oxnet (LCLC and UNIQ) (through Marie Merlet)
- NB. Departments may have their own links with subject specific areas of enrichment.
- Choices West London
carolyn.deriv@tives.co.uk



BECOMING MORE SOCIALLY AWARE BY SHARING YOUR GIFTS AND TALENTS

OUTREACH WORK

- Nazareth House – volunteering with the elderly in a care home setting. Very good for aspiring medics
CONTACT Michael Anderson
michael.anderson@nazarethcare.com
- Austin Forum – volunteering at language classes, meeting and greeting and serving refreshments. Good for language students.
CONTACT Marie Marin la Meslee
marie@austin-forum.org
- Wormholt Primary School, W12 OSR 2 placements CONTACT Anika Hargie
deputy@wormholtpark.lbhf.sch.uk
- Larmenier and Sacred Heart Primary School, W6 7BL 2 placements CONTACT Cheryl Davis
cdavis@larshrc.org
- St Joseph's Primary School, W9 1DF TBC
- Queensmill School, W12 0NW 4 placements CONTACT Andrew Nowak
anowak@queensmill.lbhf.sch.uk
- Lourdes, Westminster Archdiocese pilgrimage, Youth Director, Katrina Lavery
katrina.lavery@clovershipping.com
- National Citizenship Service (NCS) Luke Dixon
luke.dixon@the-challenge.org
- MIND Elizabeth Barnes
elizabeth.barnes1@hfmind.org.uk
- Choices West London
carolyn.deriv@tives.co.uk
- The Cardinal Hume Centre

LEADERSHIP OPPORTUNITIES

- Head Girls
- Deputy Head Girls
- Sixth Form Senior Prefects
- Heads of House
- Training as Well Being Ambassadors by the Anna Freud centre
- Leading on Fundraising activities for our school charities

SIXTH FORM COMMITTEE

Quite separate from School Council, the Sixth Form have their own student committee. This committee discusses a range of things such as how to further improve facilities for sixth formers; any areas of provision that could be strengthened. It may also discuss various Sixth Form social activities and events.

At Sixth Form we take your views seriously and your committee will report directly to the Senior Leadership Team. The Committee will also be able to present to governors about how its working and the issues being raised.





STUDENT WELL BEING AND SOCIAL LIFE

There are a number of Sixth Form social events through the year.

The Head Girl team organises an event to welcome Year 12 in the first half-term of Sixth Form. There is an established tradition of going ice-skating before Christmas and Year 13 mark end of their time at Sacred Heart with the annual Leavers' Ball.

We propose next academic year to organise an offsite induction and team building day for Year 12; and a Year 13 dinner to mark the beginning of our senior students' final year in the school.

In addition to the school counsellors, Elizabeth Barnes from MIND is in school for one day a week and is available to work with students who would like support in managing their well being.



ALUMNI COMMENTS

See below correspondence received from those who have recently left our Sixth Form.

“I am still involved with HCPT, which will always have a special place in my heart! This year I ran the Southampton half marathon for them which was a rewarding and sometimes painful experience. I am still great friends with Bea and Ellie! They are doing fabulously. We all look fondly back on our sixth form group; such fun was had!” (Medicine)

“Sacred Heart made all the difference to both my education and me as a person, and I will be forever thankful to you. Going from not knowing whether to take physics as an A-Level to doing my degree in it is very much down to your teaching and amazing support.” (Physics)

“Having already been there for five years, staying at Sacred Heart for sixth form meant that my teachers not only knew me, but also knew how I learn best: if there was something I couldn't grasp, they knew how best to explain it in a way I found easy to understand.” (Maths)

“Although I only did physics at Sacred Heart for a year, I can say that what I liked the most was the small class sizes, which meant teachers were constantly aware of how we were doing and could help with any issues/areas of weakness we had.” (Maths and French)

“The science teachers at Sacred Heart really care about you and your future so they're always there if you need help. They also always manage to make every lesson an interesting one, even if the topics aren't your favourite.” (Medicine)

“I studied chemistry and biology at A-level and physics at AS. Studying science at SHHS was a good experience, I gained lots of skills which helped me further on with my studies in university. For example taking in lots of information and connecting everything I learnt to help solve problems. The teachers in the department are also what made my experience so good – they go out of their way to make sure you understand everything and have all the resources you need to do well in your exams. During my time I had a few inspirational teachers who actually helped shape my passion for the subject I study now.” (Biology)

“Coming back to study A Level Chemistry and AS Biology at Sacred Heart was one of the best decisions I've made academically and personally, the teachers care 110% not only about helping you to do the best that you can but also about you as a person. Even though my end goal was not to take a scientific path, the science teachers supported me during the UCAS process in a way that friends at other sixth forms did not seem to experience. Furthermore, the summary book system made sure that I didn't need to cram all my note making into the short space of time before the exam and meant I had everything I needed to aid me in achieving my grades.” (Philosophy)

OFSTED 'OUTSTANDING' FOR OUR SIXTH FORM, SEPT 2017

"The sixth form opened in 2013. It is now outstanding."

"Leaders in the sixth form are extremely effective. They have high expectations for their students. They know their students very well as individuals. They set demanding targets for the students and carry out regular reviews of their progress against these targets. Outcomes for students are improving year on year."

"Leaders constantly review the 16 to 19 study programmes to ensure that they meet the needs of their students. For example, the school changed the business course to a vocational programme. Outcomes in this new programme last summer were exceptional."

"Students' attendance in the sixth form is above national averages and their punctuality is exceptional. Students benefit from the excellent quality of support from their teachers, who encourage them to arrive on time."

"All students have personal careers interviews. They are given excellent support with applications. Last year, 92% of students progressed to higher education."

"Teachers share effective practice to support their students' learning. Science staff developed support booklets for students who were struggling with some of their work. The students in science made excellent use of these booklets and improved rapidly. Similar booklets are now being developed in other subjects to accelerate students' progress."

"Leaders provide a wide range of enrichment opportunities for students. All students contribute to work in the community, supporting younger pupils, and international charities. Sixth-form students say they really enjoy these opportunities to become one of the school's 'responsible citizens.'"

"Teachers give students very clear guidance on keeping safe. Topics covered in lessons include the dangers of radicalisation and child sexual exploitation. Students say they feel very safe in school and the local area and are well prepared for life after school."

"Most students remain in the school to progress from Year 12 into Year 13. The school offers A-level courses and one vocational course in business. Those students who struggle with subjects are given excellent additional support by the teachers. However, the few students who are unable to cope with the demands of A level are given appropriate support in finding alternative courses. Pupils make excellent progress in the sixth form, and their outcomes in public examinations continue to improve every year."





Sacred Heart

HIGH SCHOOL HAMMERSMITH

SIXTH FORM

212 Hammersmith Road, London W6 7DG

Headteacher: Mrs Marian Doyle MA

Tel: 020 8748 7600 **Email:** info@sacredh.lbhf.sch.uk

www.sacredhearthigh.org.uk