



Sacred Heart High School

Enrichment

Autumn 2025



Dear Parents, Carers and Students,

At Sacred Heart, we are committed to the formation of the whole child. In the 2025/2026 school year, we are excited to launch a brand-new Enrichment Programme for all students. This year, we are offering more workshops, clubs and trips than ever before to foster the personal development of students outside the classroom which will support and develop their learning and engagement inside the classroom.

While some enrichment activities will run throughout the year, new and exciting activities will also be released each term and published in the termly enrichment booklet. Sign-up for all activities will happen centrally via a Google Form on each form class's Google Classroom. We are committed to ensuring there are a wide range of activities that run consistently and are centrally communicated to maximise learning and enjoyment.

Participation in enrichment activities during a students' time at school has been shown to benefit self-confidence, validation and socialisation. By participating in a vast range of trips, clubs and activities students acquire 'soft-skills' such as communication, confidence, teamwork, critical thinking and creativity, which are transferable to subject specific knowledge and help towards acquiring cultural capital and being career ready. Most of all, we hope students have fun and make special memories of their time at Sacred Heart.

We believe that there is something for everyone and we encourage every student to participate in this new Enrichment Programme.

Ms Brown
Head of Drama/Associate Assistant Headteacher – Enrichment

Mrs O'Donovan
Headteacher



Sign-Up

Unless otherwise stated, students can sign up to each activity using the Google Form located on their form class Google Classroom. The closing date for sign-up is Friday 19th September 2025.



Consistent Participation and Attendance

By signing up to participate in an enrichment activity students are making a commitment to attend every session associated with that enrichment activity. Attendance will be monitored by the teachers in charge via EduLink registers.



Rewards

Consistent participation and attendance will be rewarded through a badge system at year level assemblies.



Questions and Suggestions

We welcome your feedback and suggestions for enrichment activities. Please drop Ms Brown an email if you have a question or request.

Contents

Art	2
Business and Economics	5
Classics	6
Computer Science	7
Dance	8
Drama	11
DT	16
English	18
Geography	20
History	21
Library	23
Maths	25
MFL	27
Music	28
PE	30
Sociology and Psychology	33
RE	34
Science	36
Weekly Timetable	40

Art

Year 7 Art Club

Description of enrichment activity	A weekly after school club for Year 7s to try out different ways of creating Art outside of their normal Art lessons
Date and/or frequency of activity	Wednesdays 3.15-4.00pm
Year group	Yr 7
Cost	Free
Location/Room	S1
How do students sign up?	Via the Google Classroom form
How many places are available?	25
Teacher/s in charge and external organizations	Miss Karamehmetoglu

Black History Month Art Competition

Description of enrichment activity	Students can make an art piece to respond to the Black History Month theme and submit it to the Art department. A prize of a Cass Art voucher is available to each year group winner
Date and/or frequency of activity	November
Year group	Yr 7-13
Cost	Free
Location/Room	Art Rooms
How do students sign up?	Hand in an art competition piece for prizes
How many places are available?	All students from Years 7-13 can make a competition piece
Teacher/s in charge and external organizations	Ms Birkett



Year 8 Christmas Card Making Workshop

Description of enrichment activity	Students attend a workshop to create a Christmas card
Date and/or frequency of activity	Wednesday 3 rd December 3.00-4.30pm
Year group	Yr 8
Cost	Free
Location/Room	S2
How do students sign up?	Via the Google Classroom form
How many places are available?	20
Teacher/s in charge and external organizations	Ms Birkett

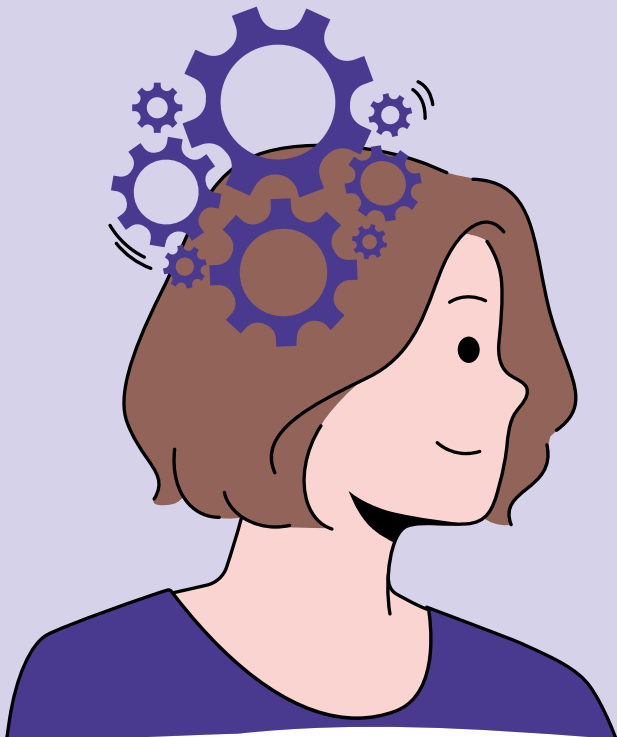
Gift Making

Description of enrichment activity	Come along and make gifts for your friends and family while exploring new skills with arts and crafts.
Date and/or frequency of activity	Tuesday 3.10-4.00pm
Year group	Yr 7-13
Cost	£10
Location/Room	M6
How do students sign up?	Via the Google Classroom form
How many places are available?	20
Teacher/s in charge and external organizations	Ms Clarke and Ms Rose

Fashion and Design Society	
Description of enrichment activity	Student will learn to design, make and then showcase ladies' high fashion. The first term focus will be designing an outfit
Date and/or frequency of activity	Wednesdays 3.15-4.00pm
Year group	Yr 11, 12 & 13
Cost	There will be a small cost for materials (when it comes time to make their garment)
Location/Room	Bute Classroom 2
How do students sign up?	Via the Google Classroom form
How many places are available?	12
Teacher/s in charge and external organizations	Ms Pethiyagoda

Business and Economics

Enterprise Society	
Description of enrichment activity	In the Enterprise Society Yr12 & 13 students will plan, organise and stage stalls to raise money for charity over the Christmas period.
Date and/or frequency of activity	Friday 12 th December 2025 + preparation
Year group	Yr 12 & 13
Cost	NA
Location/Room	The old gym and reception room
How do students sign up?	Via the Google Classroom form
How many places are available?	20 - 30
Teacher/s in charge and external organizations	Ms Garewal



Classics

Classics Club

Description of enrichment activity	This club is for students who wish to explore the ancient world through various activities.
Date and/or frequency of activity	Wednesdays Week A 3.15-4.00pm
Year group	Yr 7-13
Cost	Free
Location/Room	F11
How do students sign up?	Via the Google Classroom form
How many places are available?	30
Teacher/s in charge and external organizations	Miss Marquis

Mythology Movie Society

Description of enrichment activity	Students watch a filmed theatre production or a film based on Classics and mythology.
Date and/or frequency of activity	Wednesday 23 rd October 3.15pm Wednesday 11 th December 3.15pm
Year group	Yr 10-13
Cost	Free
Location/Room	F11
How do students sign up?	Via the Google Classroom form
How many places are available?	30
Teacher/s in charge and external organizations	Miss Marquis



Computer Science

Girls Can Code Club

Description of enrichment activity	A club to inspire girls in coding and technology through fun and engaging robotics and programming challenges.
Date and/or frequency of activity	Tuesdays
Year group	Yr 7 & 8
Cost	Free
Location/Room	G4
How do students sign up?	Via the Google Classroom form
How many places are available?	20
Teacher/s in charge and external organizations	Mr Ogwiji

Touch Typing

Description of enrichment activity	Students work on and practice their typing skills on laptops.
Date and/or frequency of activity	Every Thursday during AM reg
Year group	Yr 7-13
Cost	Free
Location/Room	M6
How do students sign up?	Invitation only
How many places are available?	10
Teacher/s in charge and external organizations	Ms Akinlabi



Dance

Sacred Heart Dance Company - Red Team (Beginner/Intermediate)

Description of enrichment activity

Students will master fundamental dance techniques, honing their physical and expressive skills through a dynamic curriculum centered on contemporary and jazz dance, while also exploring diverse styles such as Irish dance, ballet, and capoeira. They will delve into the historical origins of dance, studying the groundbreaking contributions of female modern dance pioneers like Martha Graham, Doris Humphrey, and Isadora Duncan. Through engaging with dance improvisation, students will discover how subconscious movement serves as a powerful tool for self-expression and fuels the choreographic process. By term's end, students will refine two dance choreographies: one for a competitive dance event and another for a Christmas performance, showcasing their technical proficiency and creative artistry.

Date and/or frequency of activity	Monday 3.15-4.00pm
Year group	Yr 7-13
Cost	Free
Location/Room	Dance studio
How do students sign up?	Via the Google Classroom form
How many places are available?	35
Teacher/s in charge and external organizations	Miss Anderson Partnerships - GBDO; Dance Energy; Rambert Dance; LYG, ENB + dance charities



Sacred Heart Dance Company - Red Team (Advanced)

Description of enrichment activity

Designed for students with significant dance experience, including successful completion of the SHDC 2024-2025 program and a new audition, this advanced class will elevate their technical and artistic abilities. Students will refine their dance technique through rigorous centre practice and corner work, enhancing their physical and expressive skills while deepening their understanding of sophisticated choreographic works. Building on their prior experience with dance improvisation, students will hone their ability to respond instinctively to diverse accompaniment, actively contributing original ideas to group choreographies.

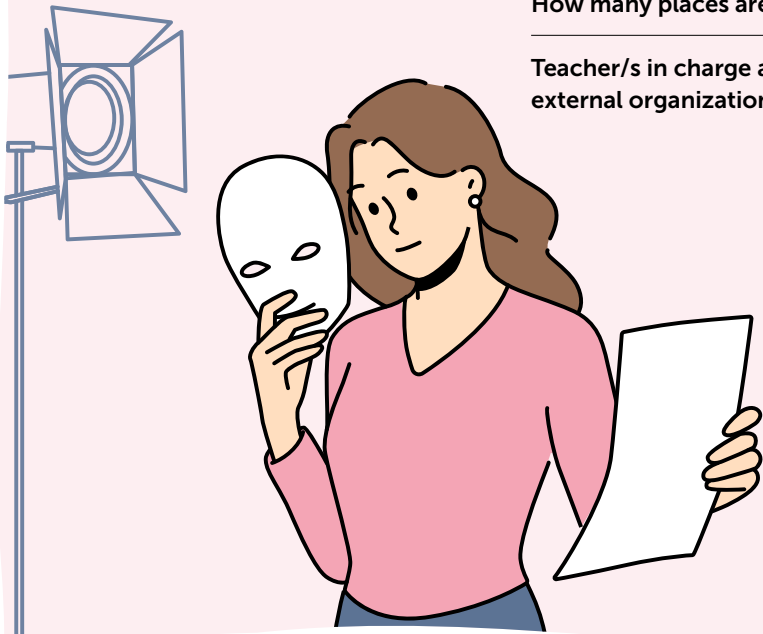
The class will also foster leadership development, with students taking on roles such as warmup leaders for peer groups, dance captains, managers, or mentors to younger dancers. These opportunities will highlight diverse dance career paths, including teaching, choreography, and production, broadening their perspective beyond performance. Through immersive improvisation exercises, students will explore how subconscious movement fuels self-expression and enriches the choreographic process.

Date and/or frequency of activity	Tuesday 3.15-4.00pm
Year group	Yr 7-13
Cost	Free
Location/Room	Dance studio
How do students sign up?	Via the Google Classroom form, then audition
How many places are available?	22
Teacher/s in charge and external organizations	Miss Anderson Partnerships- GBDO; Dance Energy; Rambert Dance; LYG, ENB + dance charities

Fitness through Irish Dancing	
Description of enrichment activity	Jig and jive all the way to Ireland and work up a sweat while doing it!
Date and/or frequency of activity	Monday Week A 3.15-4.00pm
Year group	Yr 8 & 9
Cost	Free
Location/Room	Dance studio/Old Gym
How do students sign up?	Via Google Classroom form
How many places are available?	28
Teacher/s in charge and external organizations	Ms Mallon

Drama

LAMDA	
Description of enrichment activity	LAMDA (London Academy of Music and Dramatic Art) lessons are private speech and drama lessons with our specialist LAMDA teacher Ms Manning. These lessons are taken in pairs and focus on traditional acting with monologues or duologues. At the end of each term students take a performance exam in front of a visiting LAMDA examiner and then progress through to the next grade. Medal grades 6,7 and 8 acquire UCAS points. Lessons can be in Acting or Verse and Prose which focuses more on elocution, public speaking and presentation. Once students have finied their acting grades, they may like to continue onto the Shakespeare or Musical Theatre qualification.
Date and/or frequency of activity	Every day at lunch and after school, from 3.00-5.00pm, 30 minute slots allocated.
Year group	Yr 7-13
Cost	£185 per term for 10 lessons + exam fee.
Location/Room	M4
How do students sign up?	Via the Google Classroom form
How many places are available?	Approx. 50 per term
Teacher/s in charge and external organizations	Ms Manning and Ms Brown



Jack and the Beanstalk Theatre Trip

Description of enrichment activity	Do you love a Christmas panto? Yes you do! The Lyric Hammersmith's pantomime is one of the best in London. This year's production will be Jack and the Beanstalk and as always it will have a fantastic West London twist. Put your name down via the Google Form distributed by your Drama teacher after the half term break.
Date and/or frequency of activity	Wednesday 17 th December 1.30pm matinee
Year group	Yr 7
Cost	£12
Location/Room	The Lyric Hammersmith
How do students sign up?	After October half term via Drama Google Classroom form
How many places are available?	30 places by random lottery
Teacher/s in charge and external organizations	Ms Brown

Drama Club

Description of enrichment activity	Come along to Tuesday afternoon Drama Club where you will make a play from scratch, do some improvising, play some drama games and just have fun!
Date and/or frequency of activity	Tuesday 3.15-4.00pm
Year group	KS3
Cost	Free
Location/Room	Old Gym
How do students sign up?	Via the Google Classroom form
How many places are available?	Unlimited
Teacher/s in charge and external organizations	Ms Aushana

The Theatre Box Project

Description of enrichment activity	The Theatrebox Project is run in association with Turtle Key Arts and The Lyric Hammersmith. The project focuses on theatre design – set, costume, lighting and sound. Students, alongside professional theatre designers, learn theatre design vocabulary and then create their own designs for a play and present them to their peers. This is a great opportunity for students who want to strengthen their theatre literacy and expand their knowledge of theatre.
Date and/or frequency of activity	Two workshops on Monday 6 th and Monday 13 th October 1.00-4.00pm each time
Year group	Yr 8
Cost	Free
Location/Room	G8
How do students sign up?	Via the Google Classroom form
How many places are available?	25
Teacher/s in charge and external organizations	Ms Brown in association with The Lyric Hammersmith

The Sacred Heart Performing Arts Company

Description of enrichment activity	<p>The SHHS Performing Arts Society is a vibrant and inclusive enrichment program designed to nurture creativity, confidence, and collaboration among students through the expressive power of the arts. The company offers a dynamic platform for students to explore and develop their talents in drama, music, dance, and stage production.</p> <p>Through weekly workshops, rehearsals, and performance opportunities, members engage in a wide range of activities—from acting to choreography, vocal training, and breathwork. The company also hosts seasonal showcases, talent nights, and full-scale productions, giving students the chance to perform in front of live audiences and gain real-world experience in the performing arts.</p> <p>Beyond performance, the society fosters a strong sense of community, encouraging teamwork, self-expression, and leadership. Whether students aspire to a career in the arts or simply want to try something new, the Performing Arts Society is a creative space where passion meets purpose and confidence is built.</p>
Date and/or frequency of activity	Fridays 3.15-4.00pm
Year group	KS3
Cost	£5
Location/Room	Old gym
How do students sign up?	Via the Google Classroom form
How many places are available?	50
Teacher/s in charge and external organizations	Ms Mallon

DT

Christmas Decoration Club

Description of enrichment activity	Prepare for Christmas by making a special decoration to hang on your tree.
Date and/or frequency of activity	2 weeks – Monday 8 th December and Monday 15 th December
Year group	Yr 7 & 8
Cost	Free
Location/Room	DT1 and 2
How do students sign up?	Via the Google classroom form
How many places are available?	20
Teacher/s in charge and external organizations	Mr Haddaway and Mr Fry

Badge Making Club (charitable fundraising led)

Description of enrichment activity	Who doesn't love a badge? Have fun making badges and then selling them in aid of a charity.
Date and/or frequency of activity	4 weeks – Monday 10 th November to 5 th December
Year group	Yr 8 & 9
Cost	Small fee for materials
Location/Room	DT1 and 2
How do students sign up?	Via the Google classroom form
How many places are available?	20
Teacher/s in charge and external organizations	Mr Haddaway and Mr Fry



Sewing Club

Description of enrichment activity	Re-use your own clothing and textiles to create a brand new garment.
Date and/or frequency of activity	4 weeks - Monday 29 th September to 20 th October
Year group	KS3
Cost	Free (re used textiles – provided by students)
Location/Room	DT3
How do students sign up?	Via the Google classroom form
How many places are available?	14
Teacher/s in charge and external organizations	Ms Rennalls

English

Debating Club

Description of enrichment activity	Whether you are a beginner and want to try something new, continuing to explore your debating skills or well on your way to the House of Commons, debating is a great way to find your voice!
Date and/or frequency of activity	3.15-4.00pm Tuesdays – Yr 7 beginners Wednesdays – Yr 8 & 9 intermediate Friday – Yr 10-13 advanced
Year group	All year groups
Cost	Free
Location/Room	W5
How do students sign up?	Via the Google Classroom form
How many places are available?	30
Teacher/s in charge and external organizations	Mr Cooper



Dystopian Screen Society

Description of enrichment activity	Delve into alternate worlds and expand your knowledge of dystopias through watching renowned screen adaptations of dystopian novels.
Date and/or frequency of activity	Monday 3.15-4.00pm
Year group	Yr 10-13
Cost	Free
Location/Room	English classroom
How do students sign up?	Via the Google Classroom form
How many places are available?	30
Teacher/s in charge and external organizations	Ms Porter and Ms Marsh

Harry Potter Club

Description of enrichment activity	Are you a Harry Potter expert? Can't get enough of wizards, owls, sorting hats and Bertie Botts? This is the club for you.
Date and/or frequency of activity	Wednesdays 3.15-4.00pm
Year group	Yr 7-13
Cost	Free
Location/Room	English classroom
How do students sign up?	Via the Google Classroom form (or by owl!)
How many places are available?	30
Teacher/s in charge and external organizations	Mr Williams

Geography

Young Geographer of the Year 2025

Description of enrichment activity	Let's take a closer look at the World's islands – National Competition
Date and/or frequency of activity	Runs from 15 th September until the closing date 3 rd October – Every Tuesday
Year group	Yr 7-13
Cost	Free
Location/Room	W6
How do students sign up?	Via the Google Classroom form
How many places are available?	20
Teacher/s in charge and external organizations	Ms Nye

Eco – Committee

Description of enrichment activity	Implement a whole school strategy to enhance the sustainability of SHHS
Date and/or frequency of activity	Wednesdays 3.15pm-4.00pm
Year group	Yr 7-11
Cost	Free
Location/Room	W4
How do students sign up?	Via the Google Classroom form
How many places are available?	15
Teacher/s in charge and external organizations	Ms Nye



History & Politics

Battlefields Trip

Description of enrichment activity	This History department residential trip supports the study of WW1 in Y8 and WW2 in Y9. Students will visit important sites such as trenches, cemeteries and museums and will learn all about those who lost their lives during these conflicts.
Date and/or frequency of activity	October (week before half-term)
Year group	Yr 9
Cost	Publicised by letter sent to year group
Location/Room	France and Belgium
How do students sign up?	Reply slip from letter
How many places are available?	70 students selected through random lottery
Teacher/s in charge and external organizations	History Department

Sixth Form National Archives Workshop

Description of enrichment activity	Allows students to work with experts on how to navigate and utilise archives
Date and/or frequency of activity	End of September
Year group	Yr 13
Cost	Free
Location/Room	National Archives
How do students sign up?	Via the Google Classroom form
How many places are available?	8
Teacher/s in charge and external organizations	History Department



Parliament Trip	
Description of enrichment activity	Tour and workshop in Parliament
Date and/or frequency of activity	December
Year group	Yr 12 & 13
Cost	Free
Location/Room	Parliament
How do students sign up?	Via the Google Classroom form
How many places are available?	TBC
Teacher/s in charge and external organizations	Politics Department

Library

Yr 10-13 Book Society	
Description of enrichment activity	Dive into new worlds and exciting stories with this Book Club, where readers come together to discuss thought-provoking books and share their perspectives. Whether you love fiction, fantasy, or nonfiction, there's something for everyone in our monthly reads and lively conversations.
Date and/or frequency of activity	Mondays 3.10-4.00pm
Year group	Yr 10-13
Cost	Free
Location/Room	Library
How do students sign up?	Via the Google Classroom form
How many places are available?	20
Teacher/s in charge and external organizations	Ms Spek



Journaling Club

Description of enrichment activity	Join our Journaling Club to explore self-expression, creativity, and reflection through writing. Whether you're a seasoned writer or just starting out, come share ideas, prompts, and inspiration in a supportive, judgment-free space.
Date and/or frequency of activity	Thursdays 3.10-4.00pm
Year group	Yr 7-9
Cost	Free
Location/Room	Library
How do students sign up?	Via the Google Classroom form
How many places are available?	20
Teacher/s in charge and external organizations	Ms Spek

Story Writing Club

Description of enrichment activity	Unleash your imagination in our Story Writing Club, where students create original tales and develop their writing skills. From short stories to epic adventures, you'll get to share your work, get feedback, and grow as a storyteller in a fun, supportive environment.
Date and/or frequency of activity	Wednesdays 3.10-4.00pm
Year group	Yr 7 & 8
Cost	Free
Location/Room	Library
How do students sign up?	Via the Google Classroom Form
How many places are available?	30
Teacher/s in charge and external organizations	Mr Jones

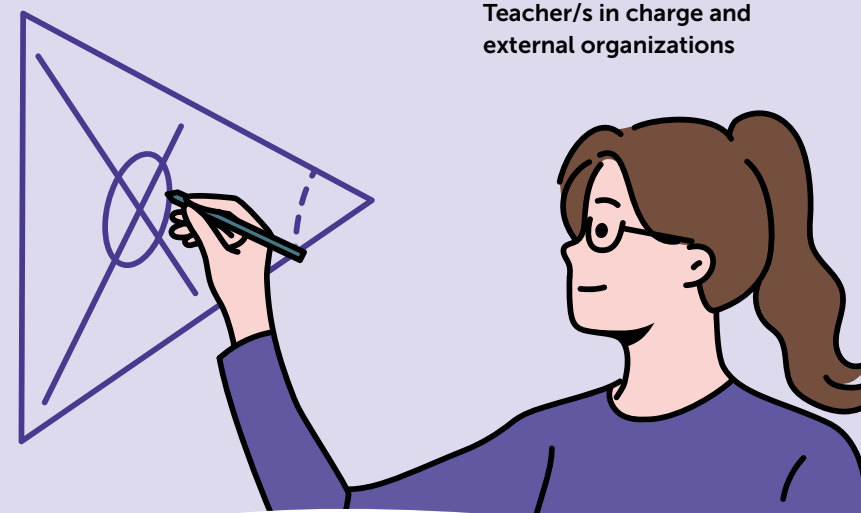
Maths

Further Maths

Description of enrichment activity	Challenge and extend your GCSE mathematical knowledge in this GCSE Maths extension.
Date and/or frequency of activity	Every Wednesday all year
Year group	Yr 11
Cost	Free
Location/Room	Maths department
How do students sign up?	By invitation only
How many places are available?	20-25
Teacher/s in charge and external organizations	Dr Leach and Mr Ludlow

Senior UKMT Challenge

Description of enrichment activity	Challenge your mathematical knowledge by taking part in this nation-wide competition.
Date and/or frequency of activity	Thursday 9 th October
Year group	Yr 12 & 13
Cost	TBC
Location/Room	W7/W8
How do students sign up?	All year 12 and 13 Maths students
How many places are available?	Unlimited
Teacher/s in charge and external organizations	Miss Rossa



Maths Inspiration Trip	
Description of enrichment activity	Be inspired in your mathematic learning at this maths theatre show.
Date and/or frequency of activity	1 st December 2025
Year group	Yr 11 & 12
Cost	£12 per student
Location/Room	Cambridge Theatre
How do students sign up?	Via the Google Classroom form
How many places are available?	30
Teacher/s in charge and external organizations	Ms Lynn and Ms Pebbles

MFL

French Spelling Bee	
Description of enrichment activity	Test your language skills and have fun competing in our French Spelling Bee, where students showcase their vocabulary in a friendly, challenging environment.
Date and/or frequency of activity	Students would initially be trained in lessons
Year group	Yr 7
Cost	TBC
Location/Room	MFL rooms, a larger venue for the final
How do students sign up?	All students are entered initially
How many places are available?	Unlimited
Teacher/s in charge and external organizations	Ms lafrate



Music

Sacred Chamber Choir

Description of enrichment activity	This choir will perform in all of our masses and liturgies that occur throughout the year.
Date and/or frequency of activity	Mondays 3.15-4.00pm
Year group	Yr 7-13
Cost	Free
Location/Room	Chapel
How do students sign up?	Via the Google classroom form then audition.
How many places are available?	No limit.
Teacher/s in charge and external organizations	Mr Swain

Contemporary Show Choir

Description of enrichment activity	This choir is the fun show choir. We will sing contemporary songs we all know and love and will perform in termly concerts, assemblies and various other events inside and outside of school.
Date and/or frequency of activity	Wednesdays 3.15-4.00pm
Year group	Yr 7-13
Cost	Free
Location/Room	G6/9
How do students sign up?	Via the Google Classroom form then audition
How many places are available?	30-40 - the more the merrier!
Teacher/s in charge and external organizations	Ms Lynn



Orchestra

Description of enrichment activity	In the orchestra, the instrumentalists will work on a range of songs for school masses, concerts and termly performances including the school musical in July. All instrumentalists welcome. Required to be Grade 1 equivalent standard.
Date and/or frequency of activity	Tuesdays 3.15-4.00pm
Year group	Yr 7-13
Cost	Free
Location/Room	G6/9
How do students sign up?	Via the Google Classroom form
How many places are available?	30-40 - the more the merrier!
Teacher/s in charge and external organizations	Maximum 30

Band Rehearsals

Description of enrichment activity	<p>Students who have already formed bands are welcome to sign up to rehearse in the band rooms. When rehearsing students are to autonomously rehearse pieces for concerts, competitions and other performance opportunities that arise. Teachers are available to help with arrangements and set up.</p> <p>Bands are expected to rehearse approx. 10 times a term to be considered for concerts and Battle of the Bands.</p>
Date and/or frequency of activity	Wednesday and Thursdays 3.15-4.00pm
Year group	Yr 7-13
Cost	Free
Location/Room	Band room, W2, G6
How do students sign up?	Students sign up weekly via the music room door
How many places are available?	6 bands can rehearse per week
Teacher/s in charge and external organizations	Music Staff

PE

Badminton

Date and/or frequency of activity	Monday 3.10-4.10pm
Year group	Yrs 7-13
Cost	Free
Location/Room	Sports Hall
How do students sign up?	Via Google Classroom enrichment form
How many places are available?	50
Teacher/s in charge and external organizations	Miss Eames

Netball

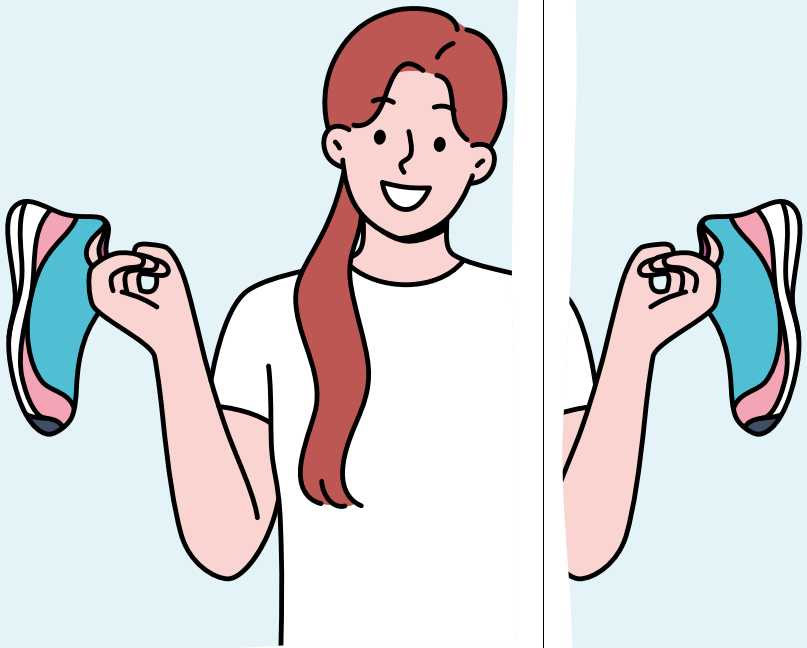
Date and/or frequency of activity	7A – Tuesday 3.10-4.10pm with Ms Eames 7B – Wednesday 3.10-4.10pm with Ms Ives 8A – Tuesday 3.10-4.10pm with Ms Eames 8B – Wednesday 3.10-4.10pm with Ms Ives Yr 9-11 – Monday 3.10-4.10pm with Ms Anderson
Year group	All
Cost	Free
Location/Room	Netball courts
How do students sign up?	Via Google Classroom form
How many places are available?	28
Teacher/s in charge and external organizations	Miss Eames

Basketball U16 & U15

Date and/or frequency of activity	U16 Thursday 3.10-4.10pm U15 Friday 3.10-4.10pm
Year group	Yr 8,9 & 10
Cost	Free
Location/Room	Netball courts
How do students sign up?	Via Google Classroom form
How many places are available?	28
Teacher/s in charge and external organizations	Cheryl – External Coach

Football

Date and/or frequency of activity	Thursday 3.10-4.10pm
Year group	Yr 9 & 10
Cost	Free
Location/Room	Netball courts
How do students sign up?	Via Google Classroom form
How many places are available?	28
Teacher/s in charge and external organizations	External Coach



Volleyball	
Date and/or frequency of activity	Tuesday 3.10-4.10pm
Year group	Yr 9 & 10
Cost	Free
Location/Room	Netball courts
How do students sign up?	Via Google Classroom form
How many places are available?	28
Teacher/s in charge and external organizations	Ms Coleman

Cheerleading	
Date and/or frequency of activity	Thursday 3.15-5.00pm Taster session on Thursday 18 th September – please wear PE kit
Year group	Yr 7-11
Cost	£40
Location/Room	Dance studio (taster session in Sports Hall)
How do students sign up?	Via Google Classroom form
How many places are available?	30
Teacher/s in charge and external organizations	Cameron – External provider /Ms Brown

Running Club	
Date and/or frequency of activity	Monday 7.45-8.10am
Year group	Yr 7-13
Cost	Free
Location/Room	Track
How do students sign up?	Via Google Classroom form
How many places are available?	28
Teacher/s in charge and external organizations	Ms Coleman

Sociology and Psychology

The Women’s Society	
Description of enrichment activity	The Women’s Society is a supportive space where young women empower each other through discussion, leadership, and community engagement. Join us to build confidence, explore important issues, and make a positive impact together.
Date and/or frequency of activity	First Monday of every month
Year group	Yr 10-13
Cost	Free
Location/Room	Bute 2
How do students sign up?	Via the Google Classroom form
How many places are available?	30
Teacher/s in charge and external organizations	Ms Pethiyagoda



RE

Candle conference – Philosophy

Description of enrichment activity	At this RE conference you will meet philosophy scholars and listen to a Q & A.
Date and/or frequency of activity	Thursday 20 th November 2025
Year group	Yr 13
Cost	£15
Location/Room	Central London
How do students sign up?	Letter sent via Edulink in Autumn term
How many places are available?	Unlimited
Teacher/s in charge and external organizations	Ms Curtis and Ms Mallon

Candle conference - Ethics

Description of enrichment activity	At this RE conference you will meet philosophy scholars and listen to a Q & A.
Date and/or frequency of activity	Friday 21 st November
Year group	Yr 13
Cost	£15
Location/Room	Central London
How do students sign up?	Letter sent via Edulink in autumn term
How many places are available?	Unlimited
Teacher/s in charge and external organizations	Mr Cregan/Ms Petrica



The Bible Club

Description of enrichment activity	Studying the historical context of Bible books and unpacking the meaning of them for the 21st century. The opportunity to learn, research and present to others.
Date and/or frequency of activity	Tuesdays Week A
Year group	Yr 10 & 11
Cost	Free
Location/Room	S10
How do students sign up?	Via the Google Classroom form
How many places are available?	20
Teacher/s in charge and external organizations	Ms Petrica

The Philosophy Society

Description of enrichment activity	The Philosophy Club is a space for curious minds to explore life's big questions—from ethics and free will to the nature of reality. The society encourages open-minded discussion, critical thinking, and respectful debate.
Date and/or frequency of activity	Wednesday Week B 3.15-4.00pm
Year group	Yr 10-13
Cost	Free
Location/Room	S10
How do students sign up?	Via the Google Classroom form
How many places are available?	20
Teacher/s in charge and external organizations	Ms Maton

Science

Science Live	
Description of enrichment activity	The chance to see and hear Britain’s top scientists, all working at the cutting edge of their specialisms.
Date and/or frequency of activity	Wednesday 19 th November
Year group	Yr 12 & 13
Cost	£25
Location/Room	Emmanuel Centre London
How do students sign up?	Via the Google Classroom form
How many places are available?	Year 13 Cohort for Chemistry
Teacher/s in charge and external organizations	Dr Rigos

TFL Society	
Description of enrichment activity	The TFL Club is perfect for students interested in urban transport, city planning, and sustainability.
Date and/or frequency of activity	Once a month
Year group	KS3 PP students
Cost	Free
Location/Room	Science classrooms
How do students sign up?	Via the Google Classroom form
How many places are available?	Unlimited
Teacher/s in charge and external organizations	Ms Filipiak

Physics in Action	
Description of enrichment activity	Latest cutting-edge research delivered in an engaging manner to complement the curriculum.
Date and/or frequency of activity	21 st November 2025
Year group	Yr 12 & 13 Physics and BTEC
Cost	£25
Location/Room	Emmanual Centre
How do students sign up?	Via the Google classroom form
How many places are available?	20
Teacher/s in charge and external organizations	Ms Nikaj



Gardening Club

Description of enrichment activity	Students learn how to plant and look after plants on the balcony in science.
Date and/or frequency of activity	Wednesdays
Year group	KS3
Cost	Free
Location/Room	Science Garden
How do students sign up?	Via the Google Classroom form
How many places are available?	15
Teacher/s in charge and external organizations	Mr Tunnicliff/Ms Ives

Chemistry in Action

Description of enrichment activity	Latest cutting-edge research delivered in an engaging manner to complement the curriculum
Date and/or frequency of activity	8th December
Year group	Yrs 12 & 13 Physics and BTEC
Cost	£25
Location/Room	Emmanual Centre
How do students sign up?	Via the Google Classroom form
How many places are available?	20
Teacher/s in charge and external organizations	Ms Filipiak

Biology Week

Description of enrichment activity	A week of engaging activities celebrating biosciences
Date and/or frequency of activity	11th-19th October
Year group	Yrs 7-13
Cost	Free
Location/Room	Varied
How do students sign up?	Via the Google Form for competitions
How many places are available?	Unlimited
Teacher/s in charge and external organizations	Mr Granger

Biology in Action

Description of enrichment activity	Latest cutting-edge research delivered in an engaging manner to complement the curriculum
Date and/or frequency of activity	1st December
Year group	Yrs 12 & 13
Cost	£25
Location/Room	Emmanual Centre
How do students sign up?	Via the Google Form for competitions
How many places are available?	20
Teacher/s in charge and external organizations	Ms Pervez

Timetable

Monday

Activity	Year groups	Time	Location
Badge-making Workshop	Years 7 and 8	10 th November – 5 th December 3.15-4pm	DT
Badminton	Years 7-13	3.15pm-4.00pm	Sports Hall
Biology in Action	Years 12 and 13	1 st December	Emmanuel Centre
Christmas Decoration workshop	Years 7 and 8	8 th & 15 th December 3.15-4pm	DT
Chemistry in Action	Years 12 and 13	8 th December	Emmanuel Centre
Current Affairs Society	Years 10-13	3.15-4.00pm	W5
Dance Company Intermediate (Blue)	Years 7-13	3.15pm – 4.15pm	Dance Studio
Dystopian Screen Society	Years 10-13	3.15pm	F2
French Spelling Bee	Year 7	Throughout the term	MFL Classrooms
Irish Dancing Fitness	Years 7-13	Week A 3.15pm	Old Gym
LAMDA	Years 7-13	30 min slot	M4
Maths Inspiration	Years 11 and 12	1 st December	Cambridge Theatre
Netball	Years 9,10,11	3.15-4.00pm	Tennis Courts
Running Club	Years 7-13	7.45-8.10pm	Track
Sacred Chamber Choir	Years 7-13	3.15-4.15pm	G6/8
Sewing Club	Years 7-10	Monday 29 th September to 20 th October 3.15-4pm	DT
The Women’s Society	Years 10-13	First Monday of the month 3.15pm	Bute Hall 2
Theatrebox Project	Year 8	Monday 6 th & 13 th October 1-4pm	Drama Room
Upper School Book Society	Years 10-13	3.15-4.00pm	Library

Tuesday

Activity	Year groups	Time	Location
Bible Club	Years 10-11	Week A 3.15-4pm	S10
Dance Company Advanced (Red)	Years 7-13	3.15pm – 4.15pm	Dance Studio
Debating – Beginners	Year 7	3.15-4.00pm	W5
Drama Club	Years 7 and 8	3.15-4.15pm	Old Gym
Girls Can Code	Years 7 and 8	3.15-4.15pm	G4
Gift-Making Arts and Crafts	Year 7-13	3.15pm	M6
LAMDA	Years 7-13	30 min slot	M4
Netball	7A and 8A teams	3.15-4.00pm	Tennis Courts
Orchestra	Years 7-13	3.15pm-4.00pm	G6/9
Volleyball	Years 9 and 10	3.15-4.00pm	Tennis courts
Young Geographer of the Year	Years 7-13	3.15pm-4.15pm 15 th September -3 rd October	W6

Wednesday

Activity	Year groups	Time	Location
Band rehearsals	Year 7-13	3.15pm-4.00pm via sign up	Band rooms
Christmas Card Making	Year 7-13	Wednesday 3 rd December 3.15pm	S2
Classics Club	Year 7-13	Week A 3.15pm	F11
Contemporary Show Choir	Years 7-13	3.15-4.00pm	G6/9
Debating – Intermediate	Year 8 and 9	3.15-4.00pm	W5
Eco-Committee	Years 7-11	3.15-4.00pm	W4
Fashion Society	Years 10-13	3.15pm	Bute Classroom 2
Further Maths	Year 11	3.15pm-4.00pm	E5
Gardening Club	Years 7-9	3.15pm-4.00pm	Science Garden
Harry Potter Club	Years 7-13	3.15pm-4.00pm	F8
Jack and the Beanstalk	Year 7	17 th December 1pm matinee	Lyric Hammersmith
LAMDA	Years 7-13	30 min slot	M4
Mythology Movie Society	Years 10-13	23 rd October and 11 th December 3.15pm	F11
Netball	7B and 8B teams	3.15-4.00pm	Tennis Courts
Philosophy Society	Years 10-13	Week B 3.15pm-4pm	S10
Science Live	Year 12 and 13	19 th November	Emmanuel Centre
Story Writing Club	Years 7 and 8	3.15-4.00pm	Library
Year 7 Art Club	Year 7	3.15pm-4.15pm	S1

Thursday

Activity	Year groups	Time	Location
Band rehearsals	Year 7-13	3.15-4.00pm via sign up	Band rooms
Candle Conference – Philosophy	Year 13	20 th November	Central London
Cheerleading	Years 7-11	3.15-5.00pm Taster session on 18 th September	Dance Studio
Football	Years 9 and 10	3.15-4.00pm	Tennis courts
Journaling Club	Years 7-9	3.15-4.00pm	Library
LAMDA	Years 7-13	30 min slot	M4
UKMT Challenge	Years 12 and 13	Thursday 9 th October	Maths Rooms
Basketball U16	Years 8,9,10	3.10-4.10pm	Netball Courts

Friday

Activity	Year groups	Time	Location
Basketball U15	Years 8,9,10	3.10-4.10pm	Netball Courts
Candle Conference - Ethics	Year 13	21st November	Central London
Debating – Advanced	Years 10-13	3.15-4.00pm	W5
LAMDA	Years 7-13	30 min slot	M4
Physics in Action	Year 12 and 13	21 st November	Emmanuel Centre
Sacred Heart Performing Arts Company (Formally Glee)	KS3	3.15pm-4.15pm	Old Gym
Enterprise Society Christmas Fair	Years 12 and 13	12 th December 2025	Old Gym and Reception Room

Societies for Years 10-13

Societies are focus groups run by students for students and overseen by a supervising teacher. Societies are chaired by an elected student president. The society may have an agenda of weekly or monthly discussion topics or activities or could perhaps work towards a whole school event in the school year.

Activity	Time	Location
The Enterprise Society	Final event on 12 th December 2025	Old Gym and Reception Room
The Fashion Society	Wednesday 3.15pm – 4.00pm	Bute Classroom 2
The Philosophy Society	Week B Wednesday 3.15pm-4pm	S10
The Women’s Society	First Monday of the month 3.15pm	Bute Hall 2
The Theatre Society	Monday 3.15pm-4.00pm	Drama Room
Upper School Book Society	Monday 3.15pm-4.00pm	Library



Enrichment

Autumn 2025



Sacred Heart High School